



**AP275-705C1D1** Combination Strobe light and Alarm Horn With Weatherproof Flow Switch with Remote Sensing, Designed For Class 1, Division 1 Environment

**Application:** Alarm units serve two important functions when installed in conjunction with emergency eyewash and shower equipment. First, alarms serve to alert facility personnel that an accident has occurred and that assistance to the user may be required. Second, alarms deter unintended or malicious operation of the emergency equipment. Alarms are activated by a flow switch that senses the movement of water in the supply line when the safety unit is activated. Once activated, the bright light flashes and the horn sounds loudly. Strobe light ideal for areas with high noise levels or where there is high ambient light.

**hazardous environment:** Unit is designed for Class 1, Division 1 hazardous environments where flammable liquids or gasses exist during normal operating conditions.

**Installation:** Unit is designed for use with combination safety stations, and can be mounted on either the vertical pipe of the station or on a wall adjacent to the unit. 120 volt, 0.28 amp electrical supply is required.

**Visual Signal:** Vaporproof amber strobe light with shatter-resistant lens. Peak candlepower of 2,000,000 and flash rate of 60 FPM.

**Audible Signal:** Weatherproof horn delivers distinctive, urgent signal. Volume is preset at 103 db at 10 feet. An adjustment screw on the front of horn allows adjustment of output sound level.

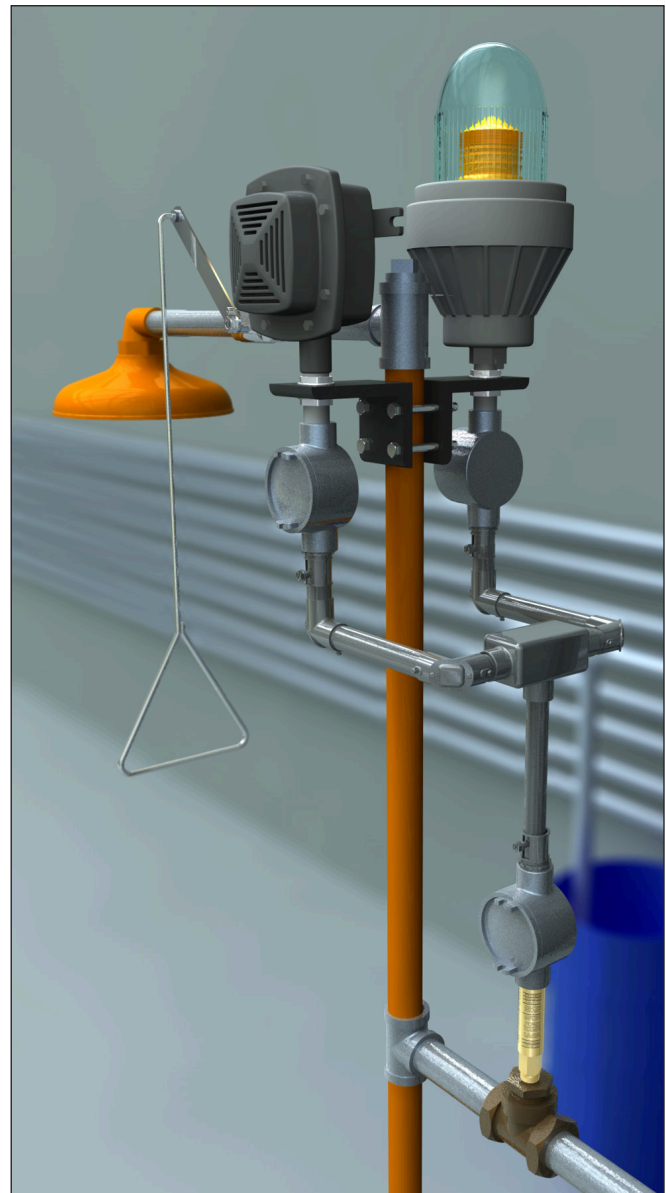
**Flow Switch:** 1-1/4" IPS double pole, double throw waterproof flow switch for installation in water supply line to emergency unit. Switch senses flow of water when either the eyewash or shower is activated. Flow switch must be installed with tee fitting in horizontal position, flow switch body in vertical position and at least 6" from closest fitting. Direction of flow is marked on switch body.

**Mounting:** Furnished complete with brackets for mounting on vertical pipe or wall and junction box. All wiring for C1D1 alarms is to be done in the field and must use approved conduits.

**Quality Assurance:** All components are factory tested prior to shipment.

### Additional Model

**AP275-700C1D1** Same as above except with single pole, double throw flow switch for activating local alarm only.



Distributed by:  
Safety Emporium  
PO Box 1003  
Blackwood, NJ 08012

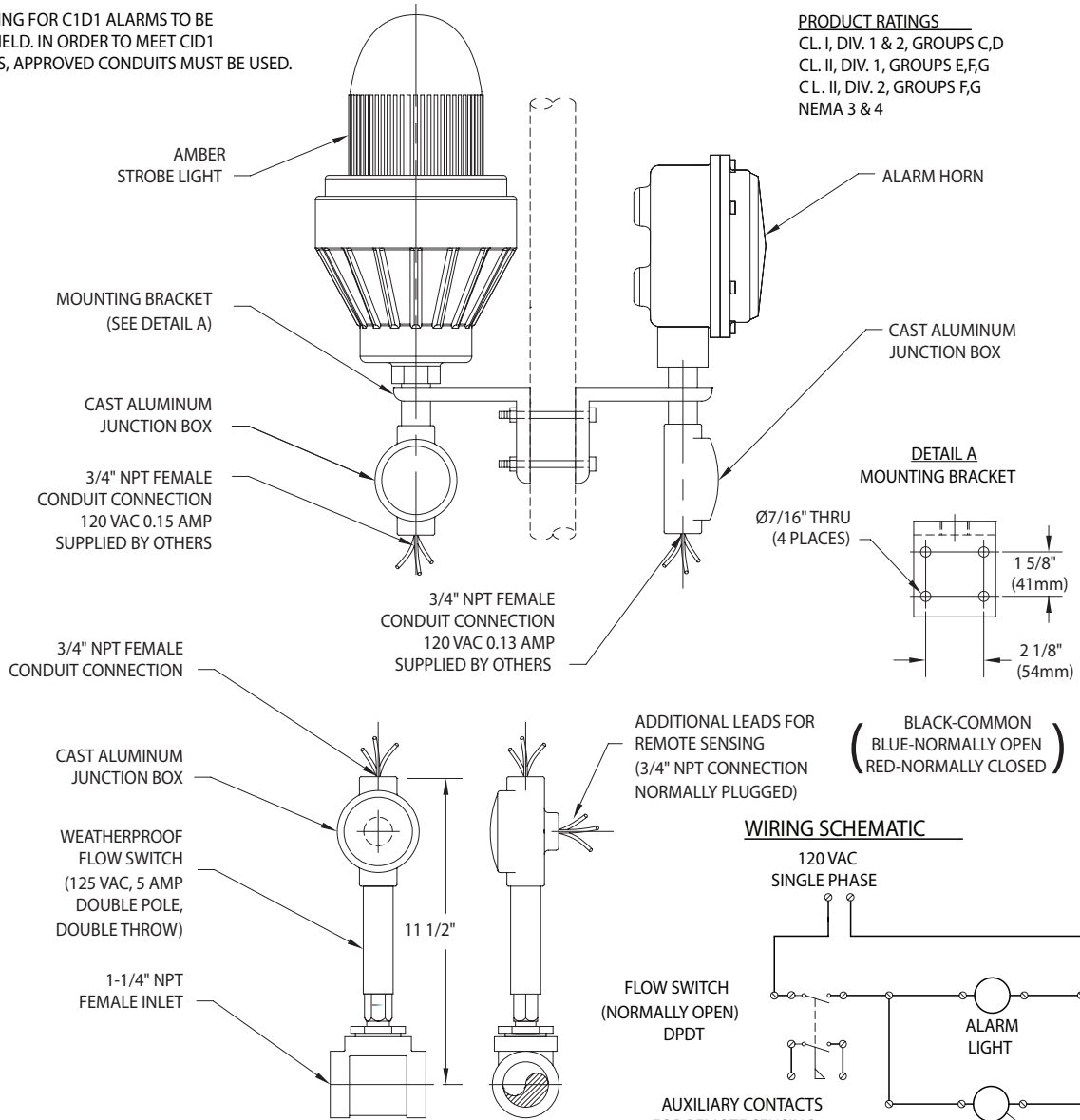
Ph: (866) 326-5412 toll-free  
Fax: (856) 553-6154  
esupport@safetyemporium.com  
www.safetyemporium.com



### AP275-705C1D1 Combination Strobe light and Alarm Horn With Weatherproof Flow Switch with Remote Sensing, Designed For Class 1, Division 1 Environment

NOTE: ALL WIRING FOR C1D1 ALARMS TO BE DONE IN THE FIELD. IN ORDER TO MEET CID1 REQUIREMENTS, APPROVED CONDUITS MUST BE USED.

**PRODUCT RATINGS**  
CL. I, DIV. 1 & 2, GROUPS C,D  
CL. II, DIV. 1, GROUPS E,F,G  
CL. II, DIV. 2, GROUPS F,G  
NEMA 3 & 4



#### NOTES:

1. FLOW SWITCH IS DESIGNED TO ACTIVATE AT 2.4 GPM AND DEACTIVATE AT 2.0 GPM.
2. FLOW SWITCH MUST BE INSTALLED VERTICALLY IN A HORIZONTAL PIPE RUN, UPSTREAM OF UNIT AND AT LEAST 6" FROM FITTING.
3. ALL THREADED ELECTRICAL CONNECTIONS MUST HAVE HAZARDOUS LOCATION RATED SEALANT APPLIED TO THREADS.
4. SOUND OUTPUT FROM HORN IS ADJUSTABLE FROM 78 db TO 103 db AT 10 FEET.

THIS SPACE FOR ARCHITECT/ENGINEER APPROVAL

Due to continuing product improvement, the information contained in this document is subject to change without notice. All dimensions are  $\pm 1/4"$  (6mm). rev. 1013