



G1696 Emergency Shower, Free Standing, Stainless Steel Construction

Application: Free standing emergency shower. Ideal for use in areas where highly corrosive materials are handled, as well as in laboratory and clean room applications.

Shower Head: 10" diameter stainless steel.

Valve: 1" IPS stainless steel stay-open ball valve. Valve has stainless steel ball and Teflon® seals. Furnished with stainless steel actuating arm and 29" stainless steel pull rod.

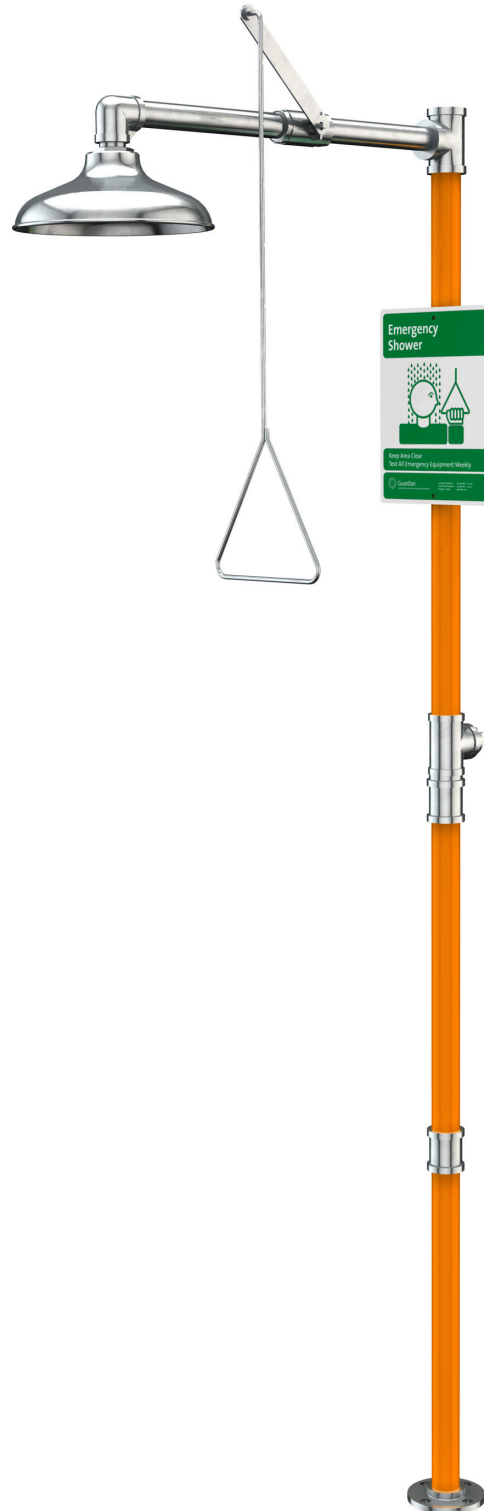
Pipe and Fittings: Schedule 40 stainless steel. Furnished with orange polyethylene covers on vertical piping for high visibility and corrosion resistance.

Supply: 1 1/4" NPT female top or side inlet.

Sign: ANSI-compliant identification sign.

Available Options

- FC20** Regulates shower flow rate to 20 GPM.
- AP275-200 ELECTRIC LIGHT AND ALARM HORN**
Flashing light and horn serve to summon assistance when shower is activated.
- TMV** G3800LF thermostatic mixing valve precisely blends hot and cold water to deliver warm (tepid) water as required by ANSI Z358.1-2014. Refer to "Tempering Units" section for complete technical and product selection information.
- AP250-015 MODESTY CURTAIN**
Modesty curtain for horizontal shower installation.

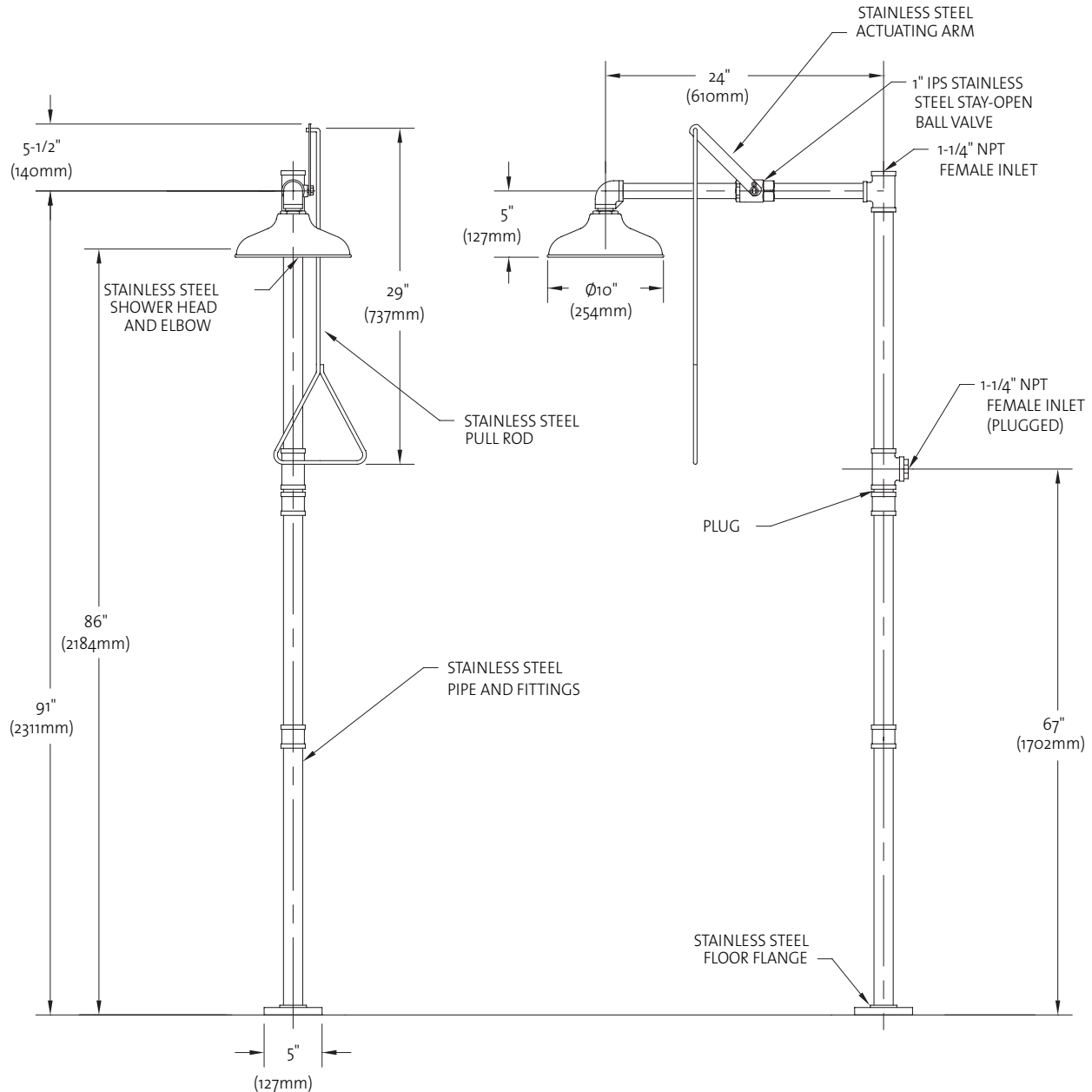


Distributed by:
Safety Emporium
PO Box 1003
Blackwood, NJ 08012

Ph: (866) 326-5412 toll-free
Fax: (856) 553-6154
esupport@safetyemporium.com
www.safetyemporium.com



□ G1696 Emergency Shower, Free Standing, Stainless Steel Construction



THIS SPACE FOR ARCHITECT/ENGINEER APPROVAL

Due to continuing product improvement, the information contained in this document is subject to change without notice. All dimensions are ± 1/4" (6mm). rev. 015

Sign Included



Guardian Equipment
1140 N North Branch St
Chicago, IL 60642

312 447 8100 TELEPHONE
312 447 8101 FACSIMILE
gesafety.com

Listed 8116. Units have been tested to and comply with ANSI Z358.1-2014 and the Uniform Plumbing Code.



ETL Listed 101496. Units have been tested to and comply with ANSI Z358.1-2014.

