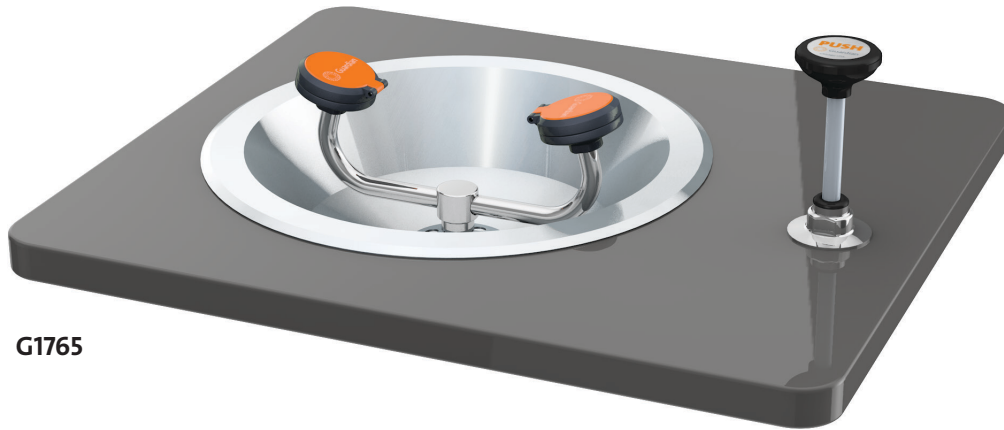
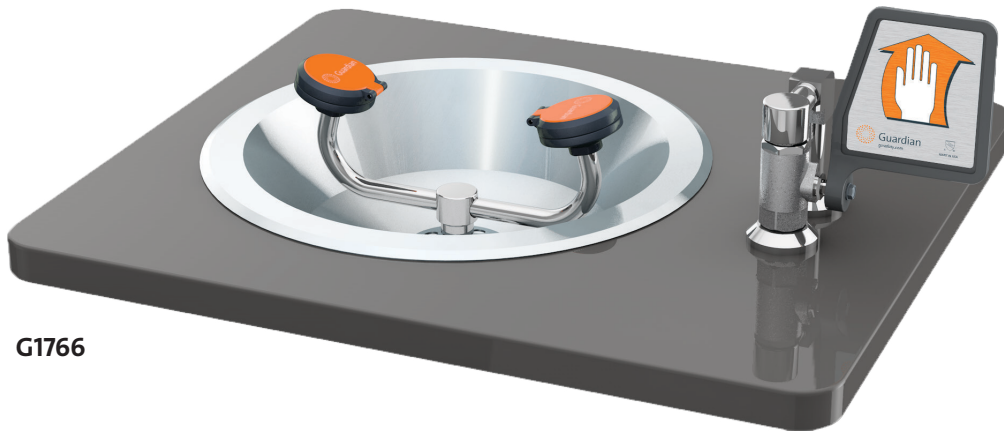




- G1765** Eye/Face Wash, Recess Deck Mounted, Push-Down Valve
- G1766** Eye/Face Wash, Recess Deck Mounted, Ball Valve with Flag Handle



G1765



G1766

Application: Eye/face wash for recessed mounting in countertop. Two large FS-Plus™ spray-type outlet heads deliver a flood of water for rinsing eyes and face.

Spray Head Assembly: Two FS-Plus™ spray heads. Each head has a “flip top” dust cover, internal flow control and filter to remove impurities from the water flow.

Valve: 1/2" IPS brass stay-open ball valve. G1765 has valve mounted below counter and activated by push-down knob. G1766 has valve mounted above counter and activated by flag handle.

Bowl: 13" diameter flanged stainless steel bowl for recessed mounting in countertop. Furnished with all hardware necessary for installation in counter.

Supply: 1/2" NPT male inlet.

Waste: 1-1/4" NPT female outlet.

Sign: ANSI-compliant identification sign.

Quality Assurance: Unit is completely assembled and water tested prior to shipment.

Available Options

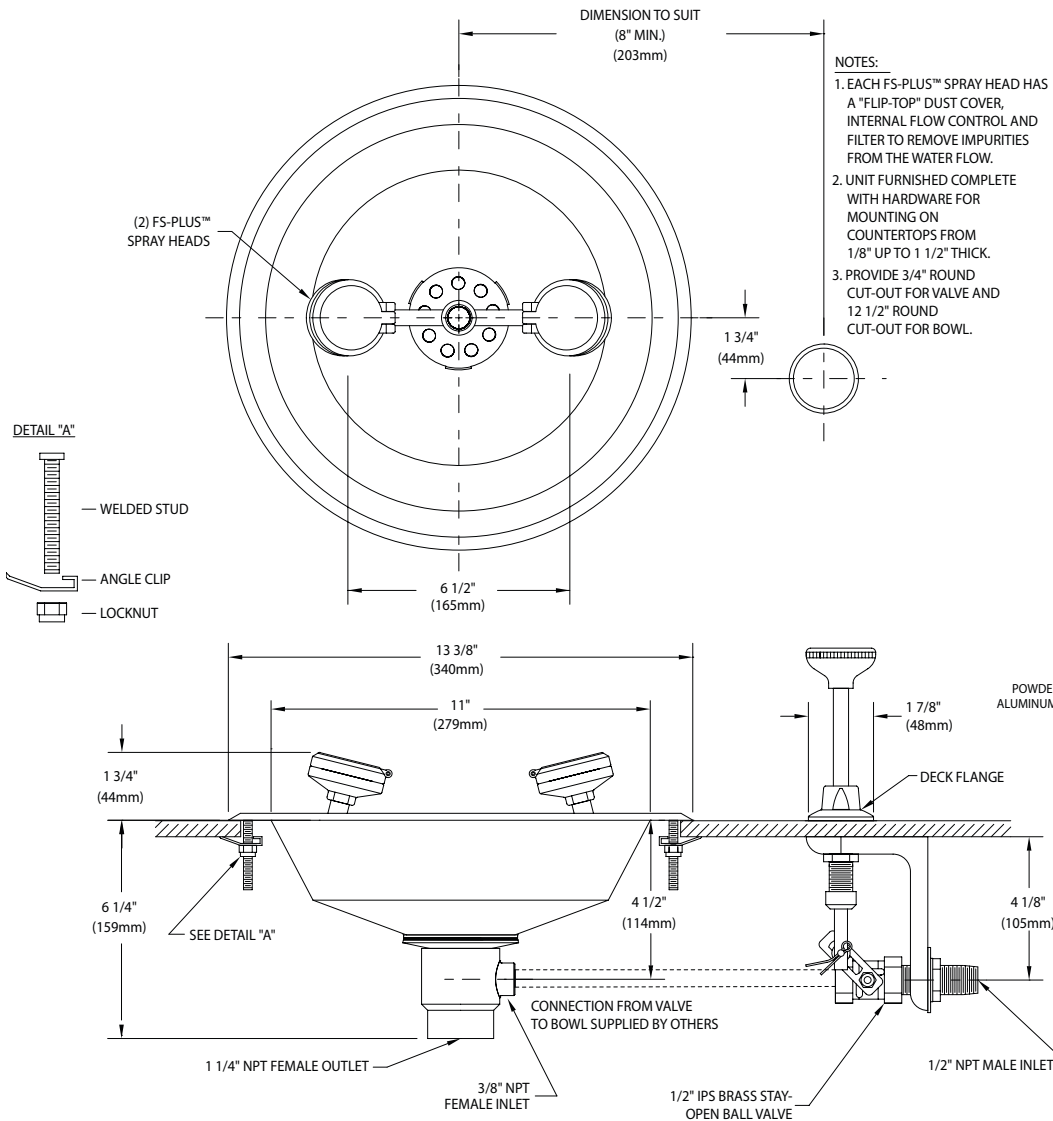
- T** Chrome plated brass tailpiece and trap with 1-1/2" IPS waste connection.
- TP** 1-1/2" OD chrome plated brass tailpiece.
- G3600LF** Thermostatic mixing valve precisely blends hot and cold water to deliver warm (tepid) water as required by ANSI Z358.1-2014. Refer to “Tempering Valves” section for complete technical and product selection information.

Distributed by:

Safety Emporium
PO Box 1003
Blackwood, NJ 08012
Ph: (866) 326-5412 toll-free
Fax: (856) 553-6154
esupport@safetyemporium.com
www.safetyemporium.com



- G1765** Eye/Face Wash, Recess Deck Mounted, Push-Down Valve
- G1766** Eye/Face Wash, Recess Deck Mounted, Ball Valve with Flag Handle



G1765
Provide 3/4" diameter hole in countertop

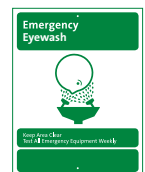
G1766
Provide (2) 7/8" diameter holes in countertop

- NOTES:**
- EACH FS-PLUS™ SPRAY HEAD HAS A "FLIP-TOP" DUST COVER, INTERNAL FLOW CONTROL AND FILTER TO REMOVE IMPURITIES FROM THE WATER FLOW.
 - UNIT FURNISHED COMPLETE WITH HARDWARE FOR MOUNTING ON COUNTERTOPS FROM 1/8" UP TO 1 1/2" THICK.
 - PROVIDE 3/4" ROUND CUT-OUT FOR VALVE AND 1 1/2" ROUND CUT-OUT FOR BOWL.

THIS SPACE FOR ARCHITECT/ENGINEER APPROVAL

Distributed by:
Safety Emporium
 PO Box 1003
 Blackwood, NJ 08012
 Ph: (866) 326-5412 toll-free
 Fax: (856) 553-6154
 esupport@safetyemporium.com
 www.safetyemporium.com

Sign Included



Due to continuing product improvement, the information contained in this document is subject to change without notice. All dimensions are ± 1/4" (6mm). rev. 081018

