



G1909BC Safety Station with WideArea™ Eye/Face Wash, Stainless Steel Bowl and Cover

Application: Combination WideArea™ eye/face wash and shower safety station. Eye/face wash features four GS-Plus™ spray-type outlet heads that deliver a flood of water over a wide area of coverage for complete rinsing of eyes and face. Eye/face wash has stainless steel cover to protect bowl from dust, dirt and other contaminants. Cover is raised automatically when flag handle is activated. Cover closes when handle is returned to closed position.

Shower Head: 10" diameter orange ABS plastic with 20 GPM flow control.

Shower Valve: 1" IPS chrome plated brass stay-open ball valve. Valve is US-made with chrome plated brass ball and PTFE seals. Furnished with stainless steel actuating arm and 29" stainless steel pull rod.

Spray Head Assembly: Four GS-Plus™ spray heads. Each head has an internal flow control and filter to remove impurities from water flow.

Eye/Face Wash Bowl: 11-1/2" diameter stainless steel with bowl cover.

Eye/Face Wash Valve: 1/2" IPS chrome plated brass stay-open ball valve. Valve is US-made with chrome plated brass ball and PTFE seals.

Pipe And Fittings: Schedule 40 galvanized steel. Furnished with orange polyethylene pipe covers for high visibility and corrosion resistance.

Supply: 1-1/4" NPT female top or side inlet.

Waste: 1-1/4" NPT female outlet. Outlet can be positioned at either 9-1/4" or 19-5/8" above finished floor by reversing lower pipe nipples.

Sign: ANSI-compliant identification sign.

Quality Assurance: Valve and spray head assemblies are factory assembled and water tested prior to shipment.

Available Options

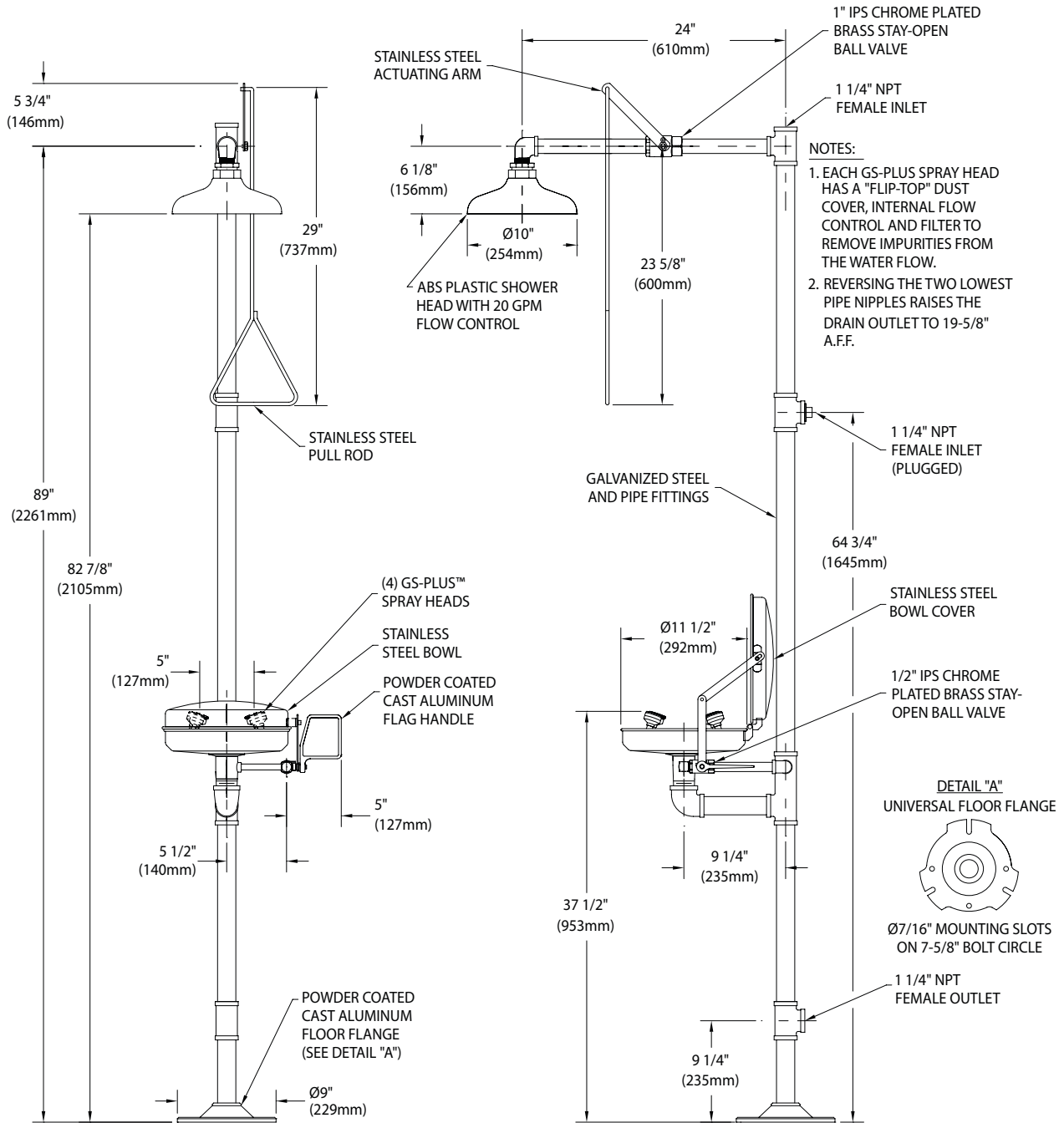
- GC** Powder coated finish on galvanized pipe and fittings. Available colors include orange, yellow, red and green.
- SSH** Stainless steel shower head.
- AP275-200** Electric flashing light and alarm horn unit for mounting on wall or vertical pipe. Light illuminates and horn sounds when eye/face wash or shower is activated. Furnished complete with flow switch and mounting hardware.
- AP250-015** Modesty curtain for mounting on safety station.
- G3800LF** Thermostatic mixing valve precisely blends hot and cold water to deliver warm (tepid) water as required by ANSI Z358.1-2014. Refer to "Tempering Valves" section for complete technical and product selection information.



Distributed by:
Safety Emporium
PO Box 1003
Blackwood, NJ 08012
Ph: (866) 326-5412 toll-free
Fax: (856) 553-6154
esupport@safetyemporium.com
www. safetyemporium.com



□ G1909BC Safety Station with WideArea™ Eye/Face Wash, Stainless Steel Bowl and Cover



THIS SPACE FOR ARCHITECT/ENGINEER APPROVAL

Due to continuing product improvement, the information contained in this document is subject to change without notice. All dimensions are ± 1/4" (6mm). rev. 1217

Distributed by:
Safety Emporium
 PO Box 1003
 Blackwood, NJ 08012
 Ph: (866) 326-5412 toll-free
 Fax: (866) 553-6154
 esupport@safetyemporium.com
 www.safetyemporium.com

Sign Included

