

INSTALLATION INSTRUCTIONS FOR TRIMLESS IN DRYWALL: FIRE-FX2™ FIRE-RATED CABINETS

1. **NOTE that trimless cabinets for drywall are designed to be installed after the first layer of drywall, but prior to the second layer.**

2. Remove all hardware and glazing, unlock cabinet if lock provided.
 3. Install a framed opening above, below and at both sides of cabinet opening at specified location. Wall opening width, height and depth must correspond with dimensions indicated in catalog or detail and submittal sheet.

4. Cabinet must be installed after the first layer of drywall has been put up. The cabinet wall flange will lay on top of that layer of drywall.

5. Use holes provided in cabinet tub for attaching to stud or substrate material. If wall configuration does not allow for that, then follow step 6 below; otherwise, skip to step 7.

6. [Drilling Additional Holes in Tub] Drill (2) 1/8" (3.2 mm) holes through tub on each side of cabinet.

7. Place cabinet in position and attach with Universal # 6 x 2-1/2" (6.4 cm) self-drilling screws. Be sure not to over-tighten on either side, which could pull the cabinet out of position in the opening and result in an exposed gap between the cabinet frame and wall opening.

8. Start the screw without completely tightening; then start a screw on the opposite side of the tub. One all screws are started, tighten each screw in a "criss-cross" pattern. A torque setting of 4-6 is recommended if using a screw gun.

9. Once screws are fully tightened, check cabinet for square and plumb. Adjust if necessary. All interior sides should be straight with no bowing or warping.

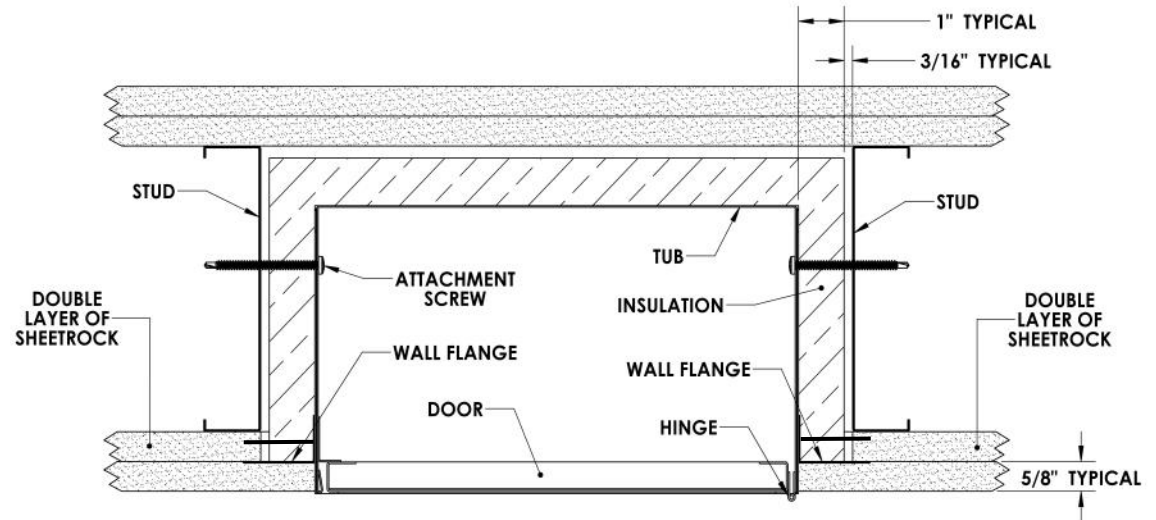
10. Check cabinet door assembly for freedom of movement. If it binds, shim as necessary to remove any racking of tub at attachments of stud. Cabinet will need to be removed temporarily in order to add shims.

11. Finish wall construction and install final top layer of drywall. The opening left in this layer of drywall for the FIRE-FX2™ cabinet should be 2" less in width and height than the opening originally made ins in step 3 above; or 1" all around. The top layer of drywall will therefore cover the cabinet wall flange, resulting in a "trimless" appearance.

12. Remove protective plastic from acrylic or glass and install decal if intended for glass. (Panorama Models Glazing is Pre-Installed)

13. Align glazing on inside of door, holding in place while installing glass mounting clips on inside of door. Do not over-tighten.

14. Install handle and roller catch or SAF-T-LOK™ in door. Check alarm if provided.



Distributed by: Safety Emporium
 Ph: (866) 326-5412 toll-free
 Fax: (856) 553-6154
 PO Box 1003 esupport@safetyemporium.com
 Blackwood, NJ 08012 www.safetyemporium.com

Note: Drawings shown on this page are examples only of typical installation in a fire-rated wall, and are not to be used as recommendations for wall construction.



ACTIVAR
 INC. www.activarcp.com
 Construction Products Group

© Activar Construction Products Group, Inc 2015
 FIRE-FX2™ AND SAF-T-LOK™ ARE TRADEMARKS OF ACTIVAR, INC.

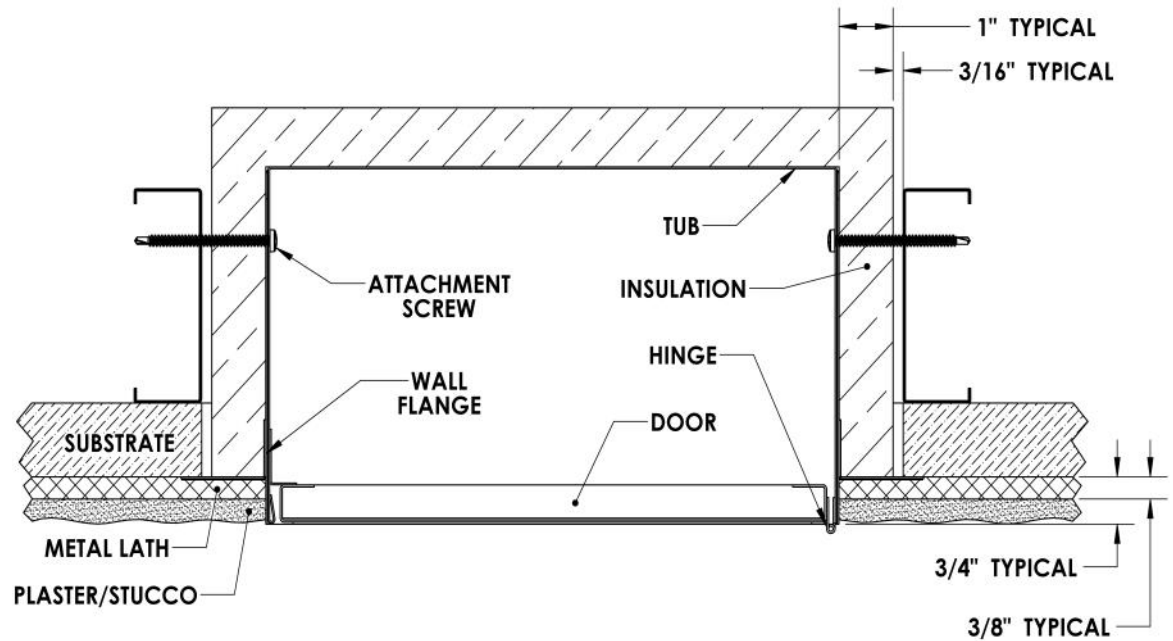
Fire-Rating: Fire-FX2™ cabinets are fabricated in accordance with the UL label for one and two hour combustable and non-combustible wall system building codes. The fire testing has met the requirement of ANSI/UL 1479 (ASTM –E814) and ULC/CAN S115-for membrane and penetration firestops. Installation instructions must be strictly adhered to in order to obtain the fire rating.



HEADQUARTERS & CUSTOMER SERVICE: 9702 NEWTON AV S, BLOOMINGTON, MN 55431 PH: 800-554-6077 FAX: 952-835-2218 EMAIL: SALES@ACTIVARCPG.COM WWW.ACTIVARCPG.COM
 ACPG WEST COAST/SAMSON: COMMERCE, CA WAREHOUSES: DALLAS TX, FORT MYERS FL, LANCASTER PA, ATLANTA GA, CHICAGO, IL, SEATTLE WA, OMAHA NE, FARGO ND 12/10/2014 141-103 REV B

INSTALLATION INSTRUCTIONS FOR PLASTER/STUCCO WALLS: FIRE-FX2™ FIRE-RATED CABINETS

- NOTE** these trimless cabinets are designed to be installed in plaster/stucco wall conditions prior to the application of lath and plaster/stucco.
- Remove all hardware and glazing, unlock cabinet if lock provided.
- Install a framed opening above, below and at both sides of cabinet opening at specified location. Wall opening width, height and depth must correspond with dimensions indicated in catalog or detail and submittal sheet.
- Use holes provided in cabinet tub for attaching to stud or substrate material. If wall configuration does not allow for that, then follow step 6 below; otherwise, skip to step 7.
- [Drilling Additional Holes in Tub] Drill (2) 1/8" (3.2 mm) holes through tub on each side of cabinet.
- Place cabinet in position and attach with Universal # 6 x 2-1/2" (6.4 cm) self-drilling screws. Be sure not to over-tighten on either side, which could pull the cabinet out of position in the opening and result in an exposed gap between the cabinet frame and wall opening.
- Start the screw without completely tightening; then start a screw on the opposite side of the tub. Once all screws are started, tighten each screw in a "criss-cross" pattern. A torque setting of 4-6 is recommended if using a screw gun.
- Once screws are fully tightened, check cabinet for square and plumb. Adjust if necessary. All interior sides should be straight with no bowing or warping.
- Check cabinet door assembly for freedom of movement. If it binds, shim as necessary to remove any racking of tub at attachments of stud. Cabinet will need to be removed temporarily in order to add shims.
- Finish wall construction. Lay metal lath material over substrate and fasten securely. Ensure that lath extends over the wall flange at the perimeter of the Fire-FX2™.
- Apply plaster and/or stucco over metal lath as per manufacturer's instructions and job specifications. Use the forward-projecting edge of the FIRE-FX2™ cabinet as a "plaster stop", for a smooth and flush final installation
- Remove protective plastic from acrylic or glass and install decal if intended for glass. (Panorama Models Glazing is Pre-Installed)
- Align glazing on inside of door, holding in place while installing glass mounting clips on inside of door. Do not over-tighten.
- Install handle and roller catch or SAF-T-LOK™ in door. Check alarm if provided.



Note: Drawings shown on this page are examples only of typical installation in a fire-rated wall, and are not to be used as recommendations for wall construction.



ACTIVAR
INC.
Construction Products Group
www.activarcpg.com

© Activar Construction Products Group, Inc 2015
FIRE-FX2™ AND SAF-T-LOK™ ARE TRADEMARKS OF ACTIVAR, INC.

Fire-Rating: Fire-FX2™ cabinets are fabricated in accordance with the UL label for one and two hour combustible and non-combustible wall system building codes. The fire testing has met the requirement of ANSI/UL 1479 (ASTM –E814) and ULC/CAN S115-for membrane and penetration firestops. Installation instructions must be strictly adhered to in order to obtain the fire rating.



HEADQUARTERS & CUSTOMER SERVICE: 9702 NEWTON AV S, BLOOMINGTON, MN 55431 PH: 800-554-6077 FAX: 952-835-2218 EMAIL: SALES@ACTIVARCPG.COM WWW.ACTIVARCPG.COM
ACPG WEST COAST/SAMSON: COMMERCE, CA WAREHOUSES: DALLAS TX, FORT MYERS FL, LANCASTER PA, ATLANTA GA, CHICAGO, IL, SEATTLE WA, OMAHA NE, FARGO ND 12/10/2014 141-103 REV B