



G1627 Emergency Shower, Recess Mounted, Stainless Steel Shower Head



Application: Emergency shower for recess mounting in a finished ceiling or soffit. Shower is activated by dual on/off pull chains.

Shower Head: 10" diameter with flange for flush mounting in ceiling. Shower head is stainless steel with stainless steel face plate.

Valve: 1" IPS brass stay-open ball valve. Valve is US-made with chrome plated brass ball and Teflon® seals. Furnished with stainless steel actuating arm, dual on/off pull chains with rings and ceiling ferrules.

Pipe and Fittings: 1" IPS galvanized steel.

Supply: 1" NPT female inlet.

Sign: ANSI-compliant identification sign.

Note: ANSI Z358.1-2014 provides that shower heads be installed no more than 96" above the finished floor. This unit should therefore not be installed in ceilings over 8 feet. For higher ceiling heights, we recommend the G1658 shower.

Available Options

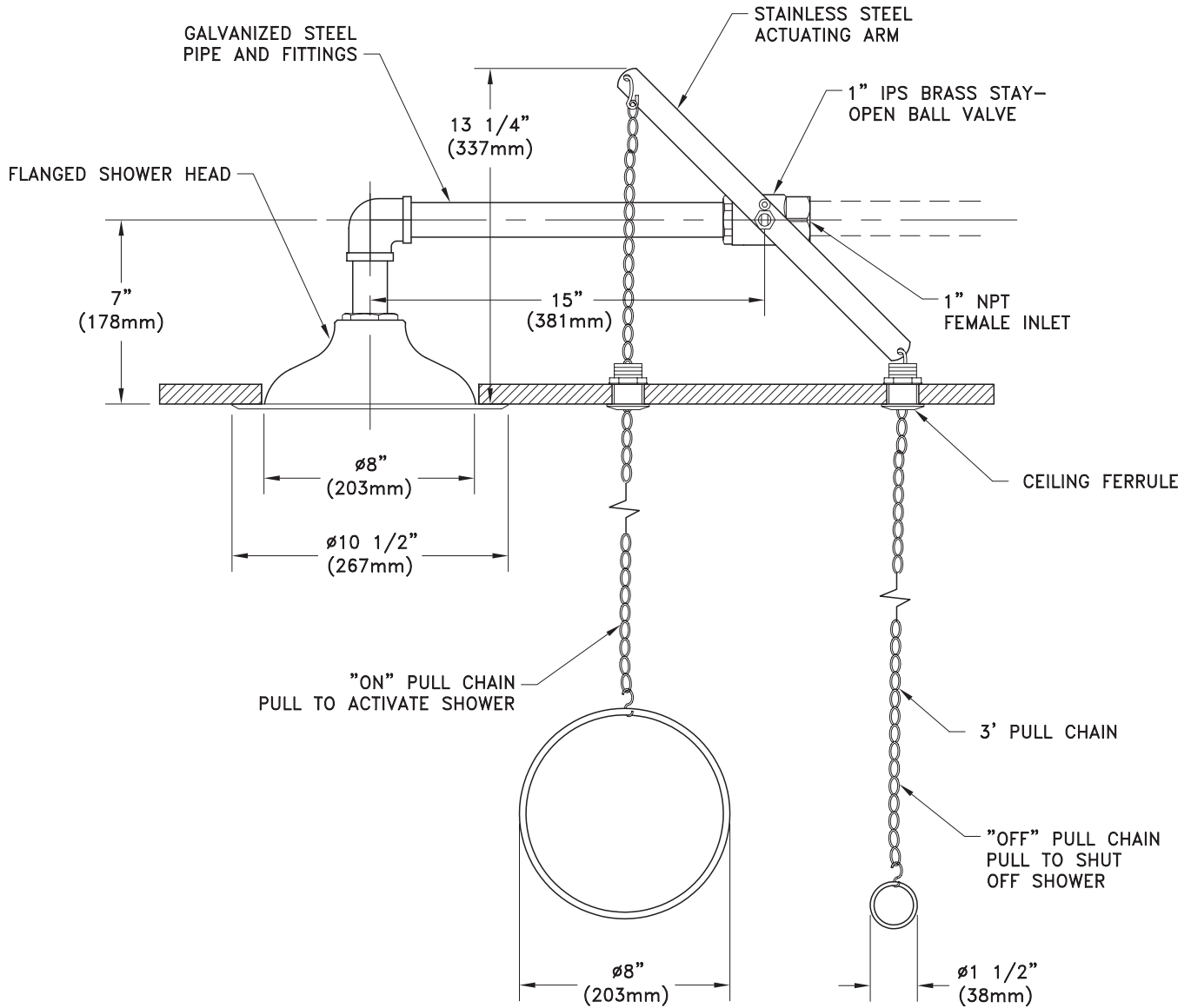
- FC20** Regulates shower flow rate to 20 GPM.
- TMV** G3800LF thermostatic mixing valve precisely blends hot and cold water to deliver warm (tepid) water as required by ANSI Z358.1-2014. Refer to "Tempering Units" section for complete technical and product selection information.
- AP280-230 ELECTRIC LIGHT AND ALARM HORN**
Flashing light/alarm horn unit is recess mounted in finished wall. Light is illuminated and horn sounds when shower is activated. Furnished complete with flow switch and mounting hardware.

Distributed by:
Safety Emporium
PO Box 1003
Blackwood, NJ 08012

Ph: (866) 326-5412 toll-free
Fax: (856) 553-6154
esupport@safetyemporium.com
www.safetyemporium.com



□ G1627 Emergency Shower, Recess Mounted, Stainless Steel Shower Head



NOTE:
UNIT IS DESIGNED FOR
MOUNTING IN 8 FT. CEILING

THIS SPACE FOR ARCHITECT/ENGINEER APPROVAL

Due to continuing product improvement, the information contained in this document is subject to change without notice. All dimensions are $\pm 1/4"$ (6mm). rev. 0115

Sign Included

