



- **G1658** Emergency Shower, Semi-Concealed, Stainless Steel Shower Head and Pipe
- **G1658PCC** Emergency Shower, Semi-Concealed, Stainless Steel Shower Head, Polished Chrome Plated Pipe



**Application:** Emergency shower for semi-concealed mounting in a finished ceiling. Unit is designed for installation in ceilings 8-10 feet above finished floor.

**Shower Head:** Shower head is 10" diameter stainless steel. Furnished with vertical supply pipe and ceiling escutcheon for mounting shower head at desired height above finished floor.

**Valve:** 1" IPS brass stay-open ball valve. Valve is US-made with chrome plated brass ball and PTFE seals. Furnished with stainless steel actuating arm, 63-1/2" stainless steel pull rod and stainless steel ceiling guide plate.

**Pipe and Fittings:** Exposed pipe is brushed stainless steel (G1658) or polished chrome plated brass (G1658PCC).

**Supply:** 1" NPT female inlet.

**Sign:** ANSI-compliant identification sign.

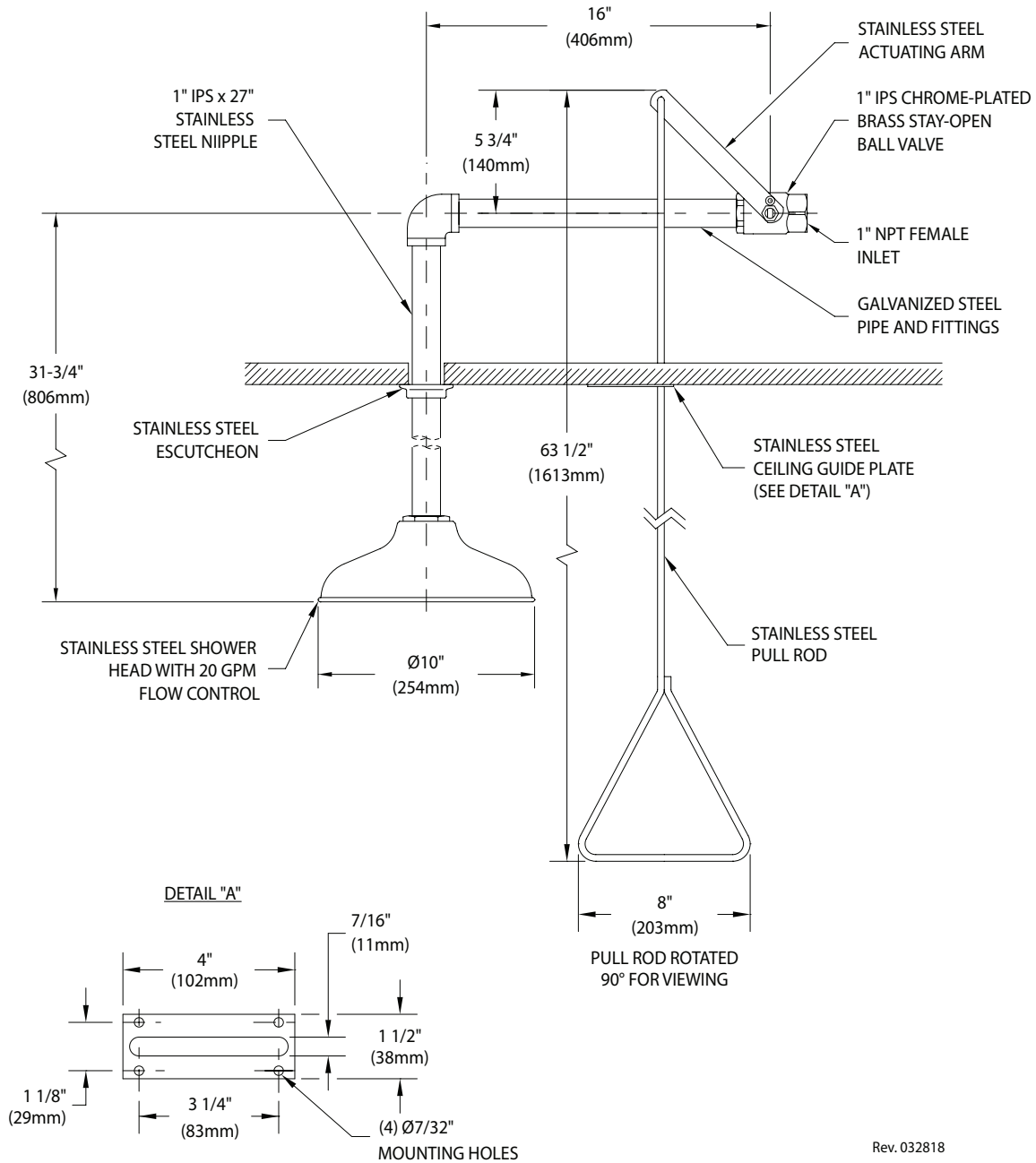
### Available Options

- **AP280-230** Electric strobe light and alarm horn unit for recess mounting in finished wall. Light illuminates and horn sounds when shower is activated. Furnished complete with flow switch and mounting hardware.
- **G6040** Thermostatic mixing valve precisely blends hot and cold water to deliver tepid water as required by ANSI Z358.1-2014. Refer to "Tempering Valves" section for complete technical and product selection information.

Distributed by:  
[Safety Emporium](#)  
PO Box 1003  
Blackwood, NJ 08012  
Ph: (866) 326-5412 toll-free  
Fax: (856) 553-6154  
[esupport@safetyemporium.com](mailto:esupport@safetyemporium.com)  
[www.safetyemporium.com](http://www.safetyemporium.com)



- **G1658** Emergency Shower, Semi-Concealed, Stainless Steel Shower Head and Pipe
- **G1658PCC** Emergency Shower, Semi-Concealed, Stainless Steel Shower Head, Polished Chrome Plated Pipe



THIS SPACE FOR ARCHITECT/ENGINEER APPROVAL

Due to continuing product improvement, the information contained in this document is subject to change without notice. All dimensions are ± 1/4" (6mm). rev. 040218

Distributed by:  
**Safety Emporium**  
 PO Box 1003  
 Blackwood, NJ 08012  
 Ph: (866) 326-5412 toll-free  
 Fax: (856) 553-6154  
 esupport@safetyemporium.com  
 www.safetyemporium.com

Sign Included

