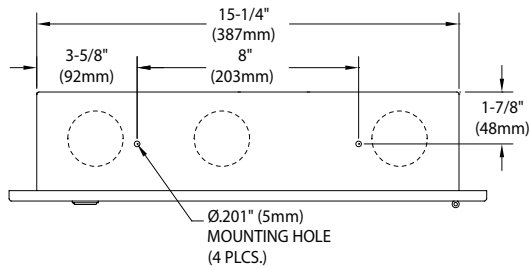
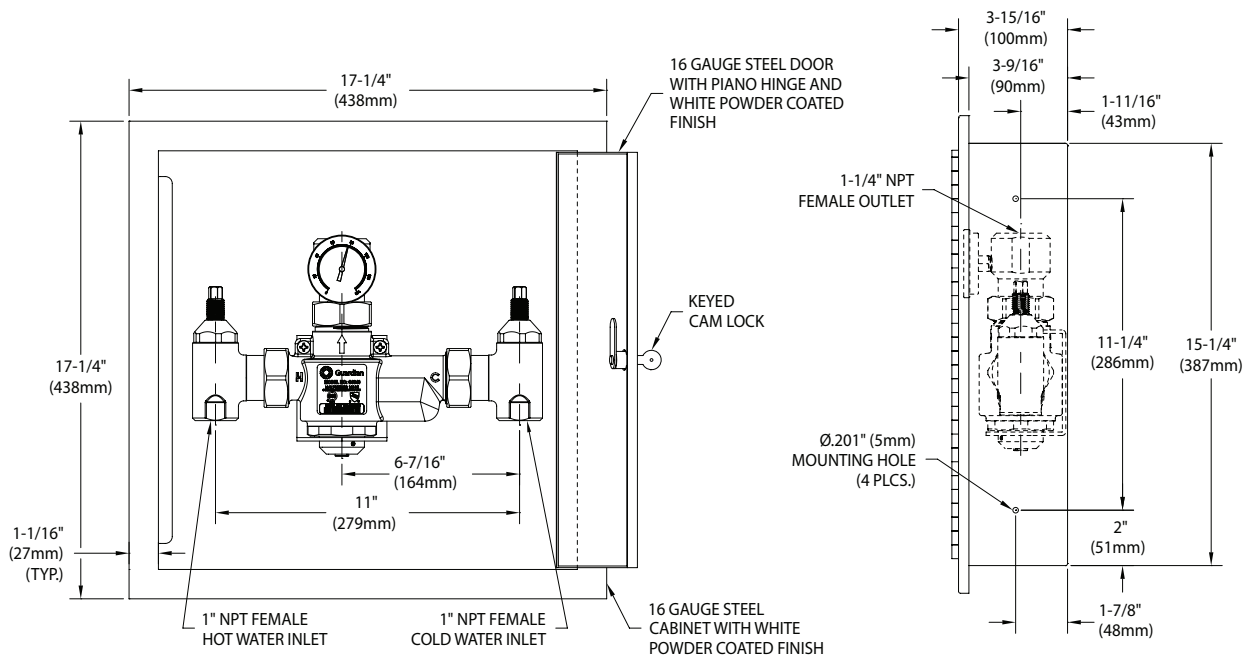


G6043-XXX G6040 Thermostatic Mixing Valve with Recess Mounted Powder Coated Steel Cabinet



Distributed by:
 Safety Emporium
 PO Box 1003
 Blackwood, NJ 08012
 Ph: (866) 326-5412 toll-free
 Fax: (856) 553-6154
 esupport@safetyemporium.com
 www.safetyemporium.com



Ordering Information

When ordering the G6043-XXX, the three digit code added to the model number specifies the following information. If no code is specified, the unit will be supplied with code 1R1 (solid door, right hinge and bottom inlets/top outlet).



Door Style

- 1 Solid door with keyed lock
- 2 Door with acrylic window and keyed lock

Door Hinge

- R Right hinge
- L Left hinge

Piping Configuration

- 1 Bottom inlets/top outlet (as shown)
- 2 Bottom inlets/bottom outlet
- 3 Rear inlets/top outlet
- 4 Rear inlets/bottom outlet
- 5 Top inlets/top outlet
- 6 Top inlets/bottom outlet

