

☐ **GBF1994** Barrier-Free Safety Station with WideArea™ Eye/Face Wash, All-Stainless Steel Construction

Application: All-stainless steel barrier-free combination WideArea™ eye/face wash and shower safety station. Shower head and pull rod are extended for improved access. Bowl is lowered and extended to permit access by wheelchair user. Profile of unit is “flattened” to comply with maximum height and knee clearance requirements. Stainless steel construction is ideal for highly corrosive environments and cleanroom applications.

ADA Compliance: Unit complies with ADA requirements for accessibility by handicapped persons (maximum height and reach, minimum knee clearance and distance from obstructions).

Shower Head: 10" diameter stainless steel with 20 GPM flow control.

Shower Valve: 1" IPS Type 316 stainless steel stay-open ball valve. Valve has stainless steel ball and PTFE seals. Furnished with stainless steel actuating arm and 47-1/2" stainless steel pull rod.

Spray Head Assembly: Four GS-Plus™ spray heads. Each head has a “flip top” dust cover, internal flow control and filter to remove impurities from water flow.

Eye/Face Wash Bowl: 11-1/8" diameter stainless steel.

Eye/Face Wash Valve: 1/2" IPS Type 316 stainless steel stay-open ball valve. Valve has stainless steel ball and PTFE seals.

Pipe and Fittings: Schedule 40 brushed stainless steel.

Supply: 1-1/4" NPT female top or side inlet.

Waste: 1-1/4" NPT female outlet. Outlet can be positioned at either 8-1/4" or 19-3/8" above finished floor by reversing lower pipe nipples.

Sign: ANSI-compliant identification sign.

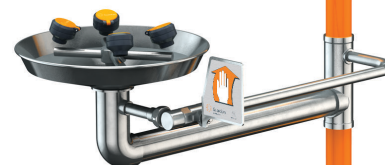
Quality Assurance: Valve and spray head assemblies are factory assembled and water tested prior to shipment.

Available Options

- ☐ **BC** Stainless steel cover for eye/face wash bowl.
- ☐ **HS** Auxiliary drench hose unit for rinsing eyes, face or body.
- ☐ **APBF250-015** Modesty curtain for mounting on Barrier-Free safety station.
- ☐ **AP275-200** Electric flashing light and alarm horn unit for mounting on wall or vertical pipe. Light illuminates and horn sounds when eye/face wash or shower is activated. Furnished complete with flow switch and mounting hardware.
- ☐ **G3800LF** Thermostatic mixing valve precisely blends hot and cold water to deliver warm (tepid) water as required by ANSI Z358.1-2014. Refer to “Tempering Valves” section for complete technical and product selection information.

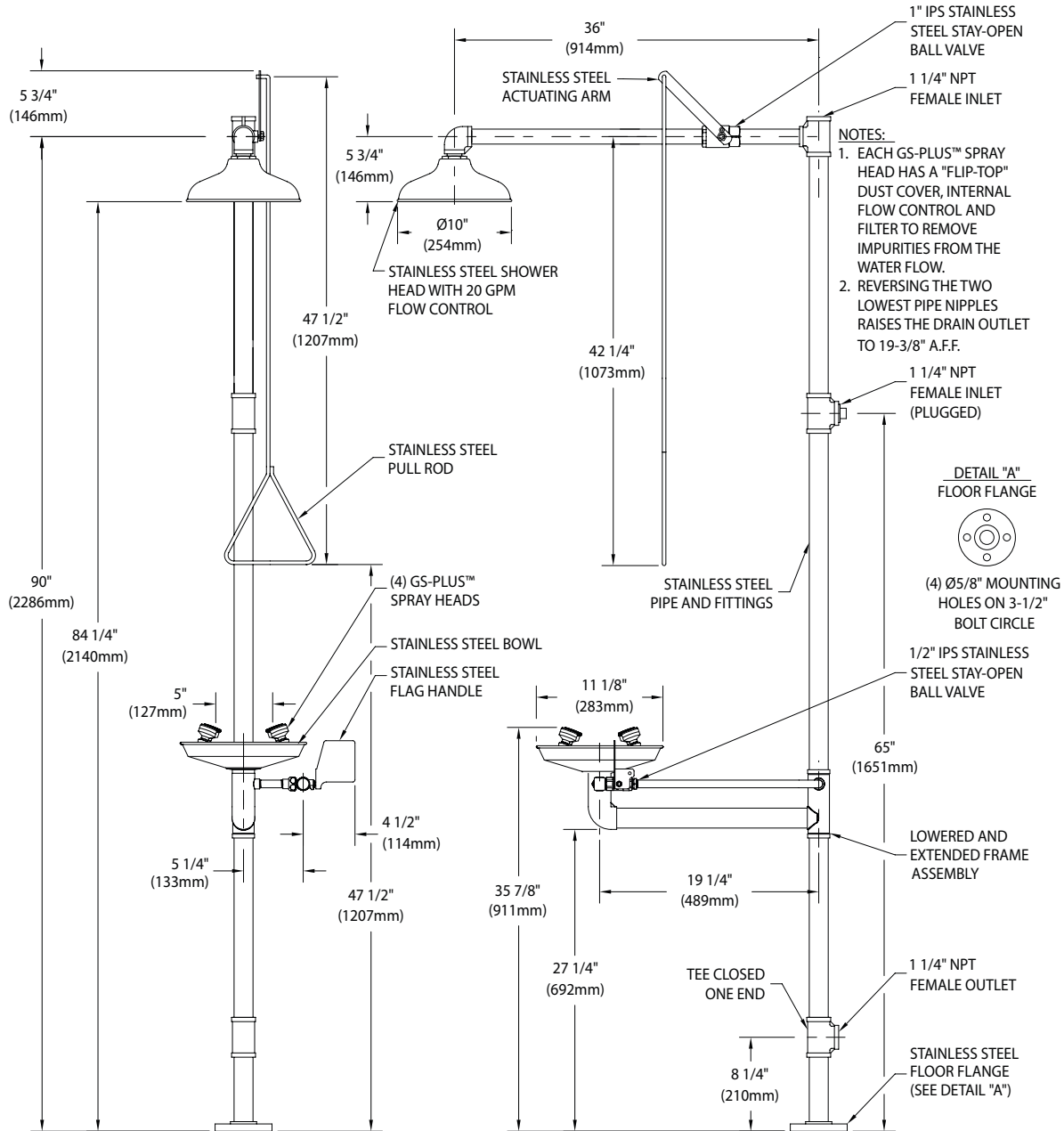


Distributed by:
Safety Emporium
 PO Box 1003
 Blackwood, NJ 08012
 Ph: (866) 326-5412 toll-free
 Fax: (856) 553-6154
esupport@safetyemporium.com
www.safetyemporium.com





GBF1994 Barrier-Free Safety Station with WideArea™ Eye/Face Wash, All-Stainless Steel Construction



THIS SPACE FOR ARCHITECT/ENGINEER APPROVAL

Due to continuing product improvement, the information contained in this document is subject to change without notice. All dimensions are $\pm 1/4$ " (6mm). rev. 062718

Distributed by:
Safety Emporium
PO Box 1003
Blackwood, NJ 08012
Ph: (866) 326-5412 toll-free
Fax: (856) 553-6154
esupport@safetyemporium.com
www.safetyemporium.com

Sign Included

