



□ **GBF2362** Recessed Safety Station with Drain Pan and Daylight Drain, Recess Mounted Shower Head, Fire-Rated Construction

Application: Recessed barrier-free eye/face wash and shower safety station for use in 1- and 2-hour fire-rated walls. Unit has ceiling mounted recessed shower head and drain pan. Stainless steel cover provides attractive appearance and protects unit when not in use. When activated, cover serves as pan to collect waste water and return it into unit for drainage. Rather than connecting to building drainage system, unit has 1" IPS stainless steel drain on front of unit for waste water. Front drain provides for less costly installation while facilitating regular testing of unit.

Fire Resistance: Unit can be used in 1- and 2-hour fire-rated walls without compromising integrity of wall. Unit has endothermic ceramic fiber blanket around cabinet and is sealed with fire barrier caulk. Unit is UL-listed as "Through-Penetration Firestop System No. W-L-7167." Use fire barrier caulk when installing unit.

ADA Compliance: When installed at recommended mounting heights, unit complies with ADA requirements for accessibility by handicapped persons.

Shower Head: 11-3/4" diameter stainless steel with 20 GPM flow control and flange for flush mounting in ceiling.

Shower Valve: 1" IPS brass stay-open ball valve with stainless steel "panic bar" actuator.

Cover/Drain Pan: 16 gauge stainless steel combination cover and drain pan. Grasping "panic bar" handle and opening cover pulls spray head assembly down from vertical to horizontal position, activating water flow. While unit is in operation, waste water is collected in drain pan and re-directed to daylight drain for drainage out the front of unit. Unit remains in operation until cover is returned to closed position.

Eye/Face Wash Spray Head Assembly: Two FS-Plus™ spray heads mounted on supply arms. Each spray head has individually adjustable flow control and filter to remove impurities from water flow.

Eye/Face Wash Valve: 1/2" IPS brass plug-type valve with O-ring seals. Furnished with in-line strainer to protect valve from debris and foreign matter.

Mounting: 16 gauge stainless steel cabinet with flange featuring 3/8" return for recessed mounting in wall.

Supply: 1" NPT male inlet.

Waste: 1" IPS stainless steel drain elbow on front of unit.

Sign: ANSI-compliant identification sign.

Quality Assurance: Unit is completely assembled and water tested prior to shipment.

U.S. Patent 5,768,721



Note: Shown with optional AP280-235 electric light and alarm horn unit (sold separately).

NOTE: ANSI Z358.1-2014 specifies that shower heads be installed no more than 96" above the finished floor. This unit should therefore not be installed in ceilings over 8 feet. For higher ceiling heights, we recommend the GBF2352 or GBF2372 units.

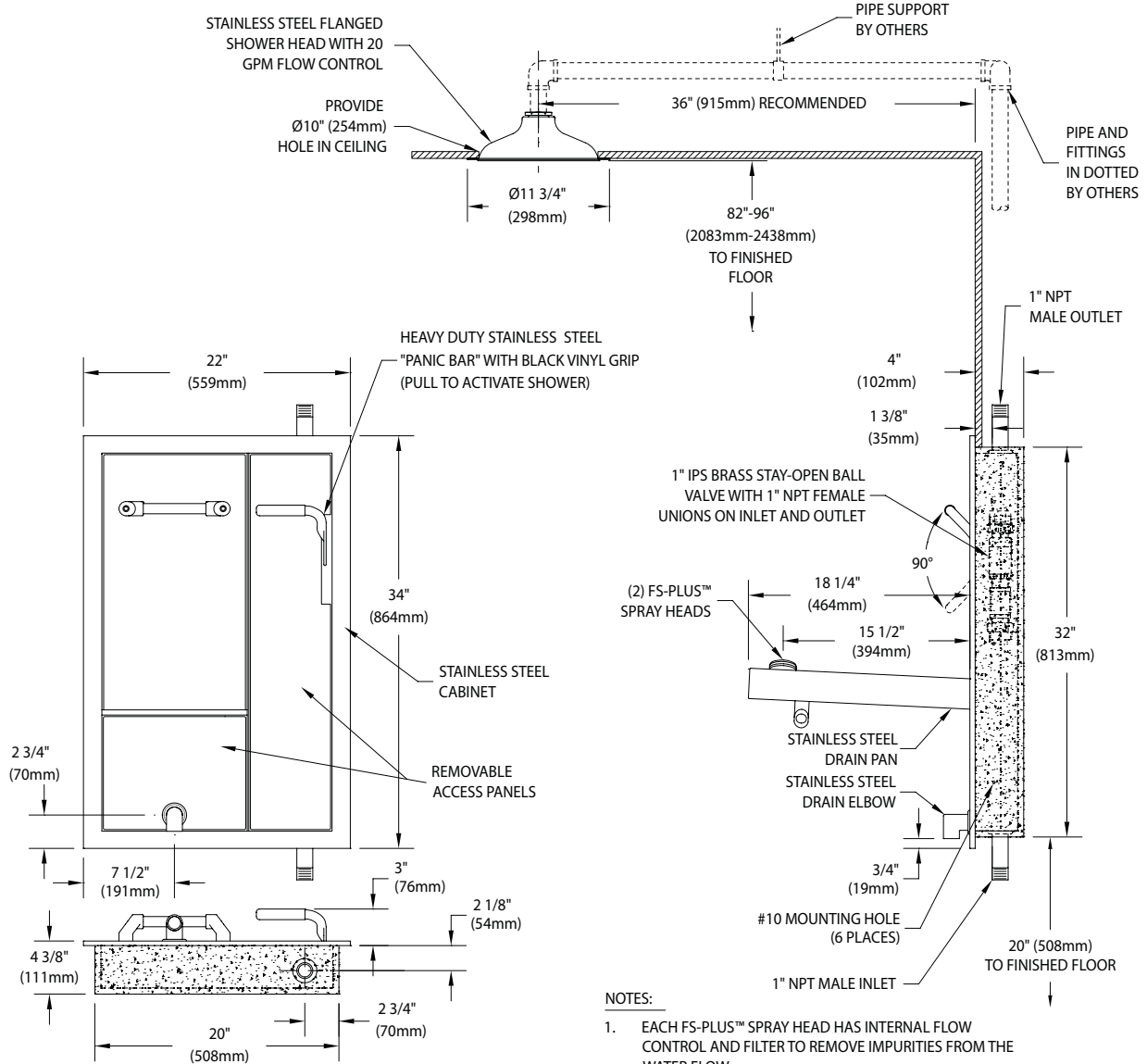
Available Options

- **AP250-065** Modesty Curtain
- **AP280-235** Electric Light and Alarm Horn
- **AP280-237** Electric Light and Alarm Horn with Silencing Switch
- **G3800LF** Thermostatic Mixing Valve





GBF2362 Recessed Safety Station with Drain Pan and Daylight Drain, Recess Mounted Shower Head, Fire-Rated Construction



CABINETS FOR USE IN PENETRATION FIRESTOP SYSTEMS. SEE UL FIRE RESISTANCE DIRECTORY <3KFH>.

NOTES:

1. EACH FS-PLUS™ SPRAY HEAD HAS INTERNAL FLOW CONTROL AND FILTER TO REMOVE IMPURITIES FROM THE WATER FLOW.
2. UNIT IS FURNISHED WITH IN-LINE STRAINER TO PROTECT VALVE AND SPRAY HEADS FROM DEBRIS IN WATER LINE.
3. CABINET IS 16 GAUGE TYPE 304 STAINLESS STEEL WITH #4 BRUSHED SATIN FINISH.
4. UNIT ENCAPSULATED ON FIVE SIDES WITH ENDOTHERMIC MATERIAL FOR USE IN PENETRATION FIRESTOP SYSTEMS.

THIS SPACE FOR ARCHITECT/ENGINEER APPROVAL

Due to continuing product improvement, the information contained in this document is subject to change without notice. All dimensions are ± 1/4" (6mm). rev. 021920

Distributed by:
Safety Emporium
 PO Box 1003
 Blackwood, NJ 08012
 Ph: (866) 326-5412 toll-free
 Fax: (856) 553-6154
 esupport@safetyemporium.com
 www.safetyemporium.com

Sign Included

