



□ GVR1903 Vandal-Resistant Safety Station with Eyewash

Application: Combination eyewash and shower safety station with vandal-resistant construction. Ideal for use in schools and other areas where equipment may be subject to abuse. All threaded connections are secured with set screws or cement to prevent disassembly.

Shower Head: 8" diameter chrome plated cast brass shower head with 20 GPM flow control.

Shower Valve: 1" IPS chrome plated brass **stay-open ball** valve with stainless steel actuating arm and 29" stainless steel pull rod.

Spray Head Assembly: Two vandal-resistant GS-Plus™ spray heads. Each head has a brass body, stainless steel "flip top" dust cover, internal flow control and filter to remove impurities from the water flow. Spray heads have retaining ring with set screw to protect internal components.

Eyewash Bowl: 11-1/2" stainless steel.

Eyewash Valve: 1/2" IPS chrome plated brass **stay-open ball** valve with flag handle.

Pipe and Fittings: Schedule 40 galvanized steel. Furnished with orange polyethylene covers for vertical piping for high visibility and corrosion resistance.

Supply: 1-1/4" NPT female top or side inlet.

Waste: 1-1/4" NPT female outlet.

Sign: Furnished with ANSI-compliant identification sign.

Quality Assurance: Valve, bowl and spray head assemblies are factory assembled and water tested prior to shipment.

This model is the recommended replacement for the GVR1903SC which was identical but had self-closing valves. Guardian no longer manufactures self-closing valves as these do not meet ANSI standards.

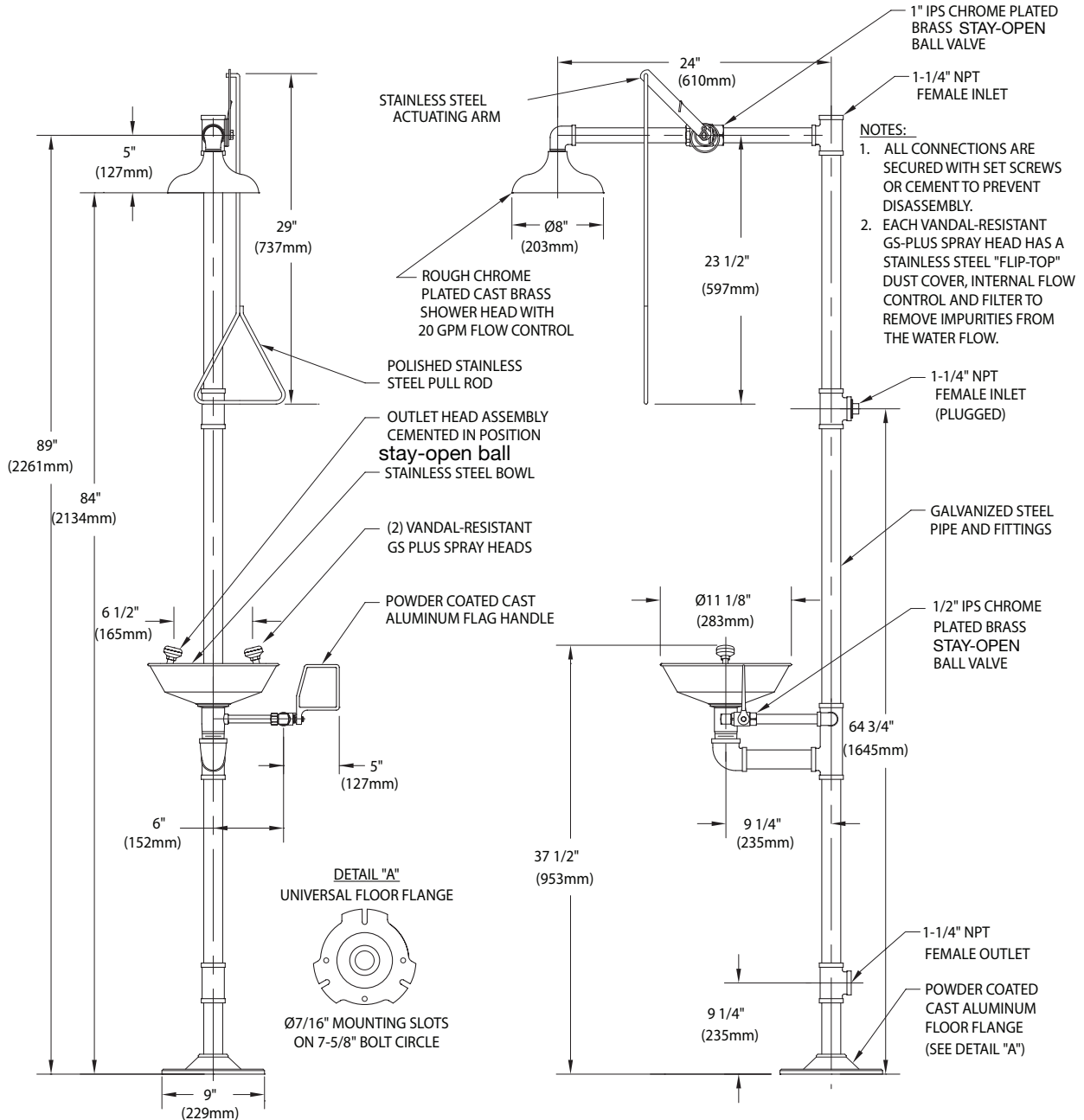
Available Options

- **AP275-200 Electric Light and Alarm Horn**
Flashing light and alarm horn for mounting on safety station. Light is illuminated and horn sounds when either eyewash or shower is activated. Light/alarm unit is recommended as additional deterrent to vandalism and unauthorized activation of unit.
- **AP250-015 Modesty Curtain**
Modesty curtain for mounting on safety station.
- **TMV G3800LF** thermostatic mixing valve precisely blends hot and cold water to deliver warm (tepid) water as required by ANSI Z358.1-2014. Refer to "Tempering Units" section for complete technical and product selection information.





GVR1903 Vandal-Resistant Safety Station with Eyewash



THIS SPACE FOR ARCHITECT/ENGINEER APPROVAL

Due to continuing product improvement, the information contained in this document is subject to change without notice. All dimensions are ± 1/4" (6mm). rev. 015

Distributed by:
Safety Emporium
 PO Box 1003
 Blackwood, NJ 08012
 Ph: (866) 326-5412 toll-free
 Fax: (856) 553-6154
 esupport@safetyemporium.com
 www.safetyemporium.com

Sign Included

