



# WaterSaver

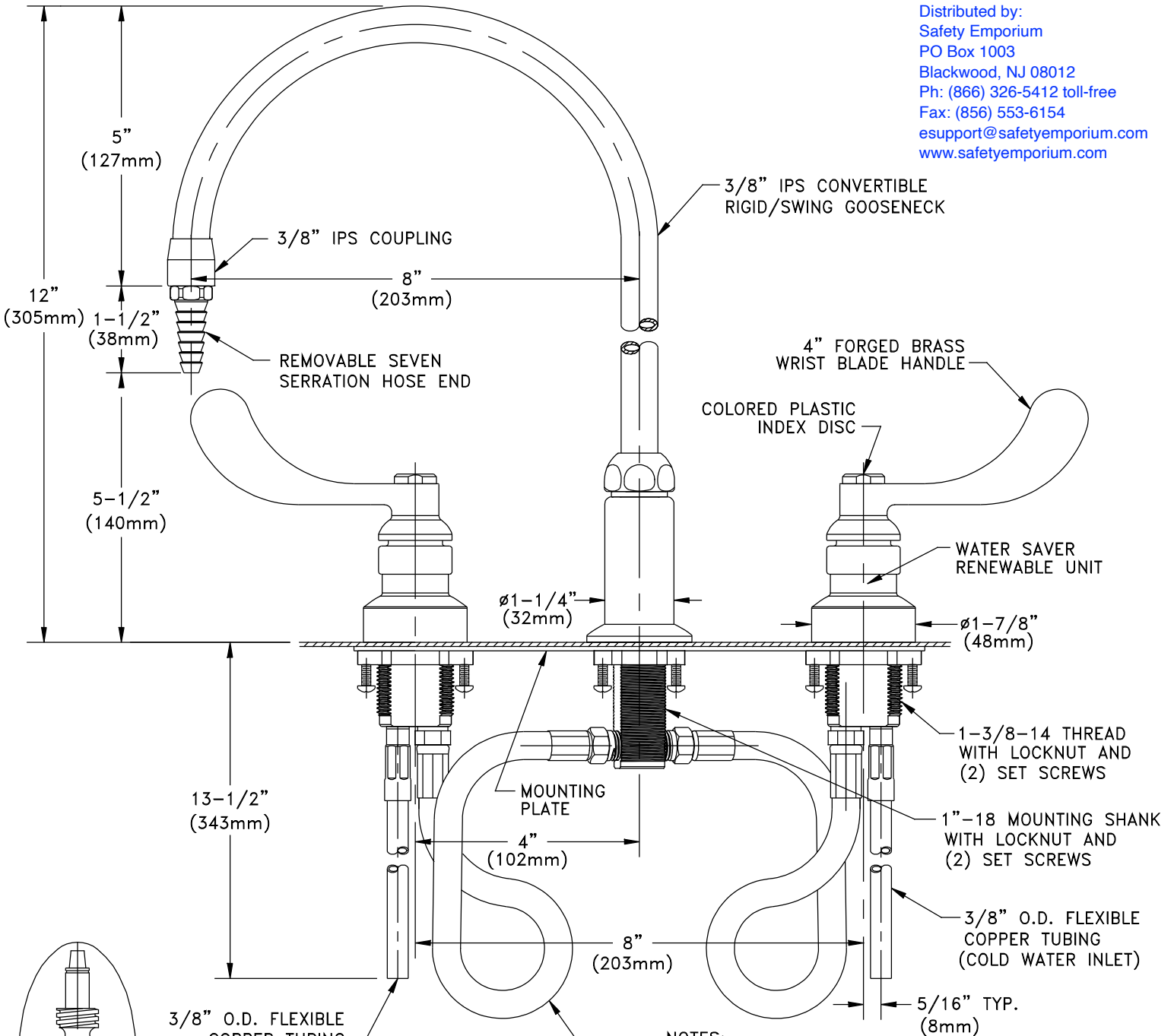
INNOVATIVE PRODUCTS FOR RESEARCH

WaterSaver Faucet  
701 W Erie St  
Chicago, IL 60654

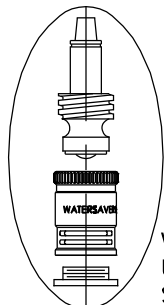
312 666 5500 TELEPHONE  
312 666 5501 FACSIMILE  
wsflab.com

## L2214-8BH

LABORATORY MIXING FAUCET, DECK MOUNTED, 8" RIGID/SWING GOOSENECK, WRIST BLADE HANDLES



Distributed by:  
Safety Emporium  
PO Box 1003  
Blackwood, NJ 08012  
Ph: (866) 326-5412 toll-free  
Fax: (856) 553-6154  
esupport@safetyemporium.com  
www.safetyemporium.com



WATER SAVER RENEWABLE UNIT WITH REPLACEABLE STAINLESS STEEL SEAT

MEASUREMENTS MAY VARY ±1/4" (6mm).

### NOTES:

1. VALVES AND CENTER FITTING ARE FULLY ASSEMBLED AND FACTORY TESTED.
2. FIXTURE IS CERTIFIED BY CSA INTERNATIONAL TO COMPLY WITH ASME A112.18.1M AND CSA B125.1.
3. PROVIDE (2) Ø1-3/8" HOLES FOR VALVES AND (1) Ø1-1/32" HOLE FOR CENTER FITTING.
4. FIXTURE HAS A POLISHED CHROME PLATED FINISH.

