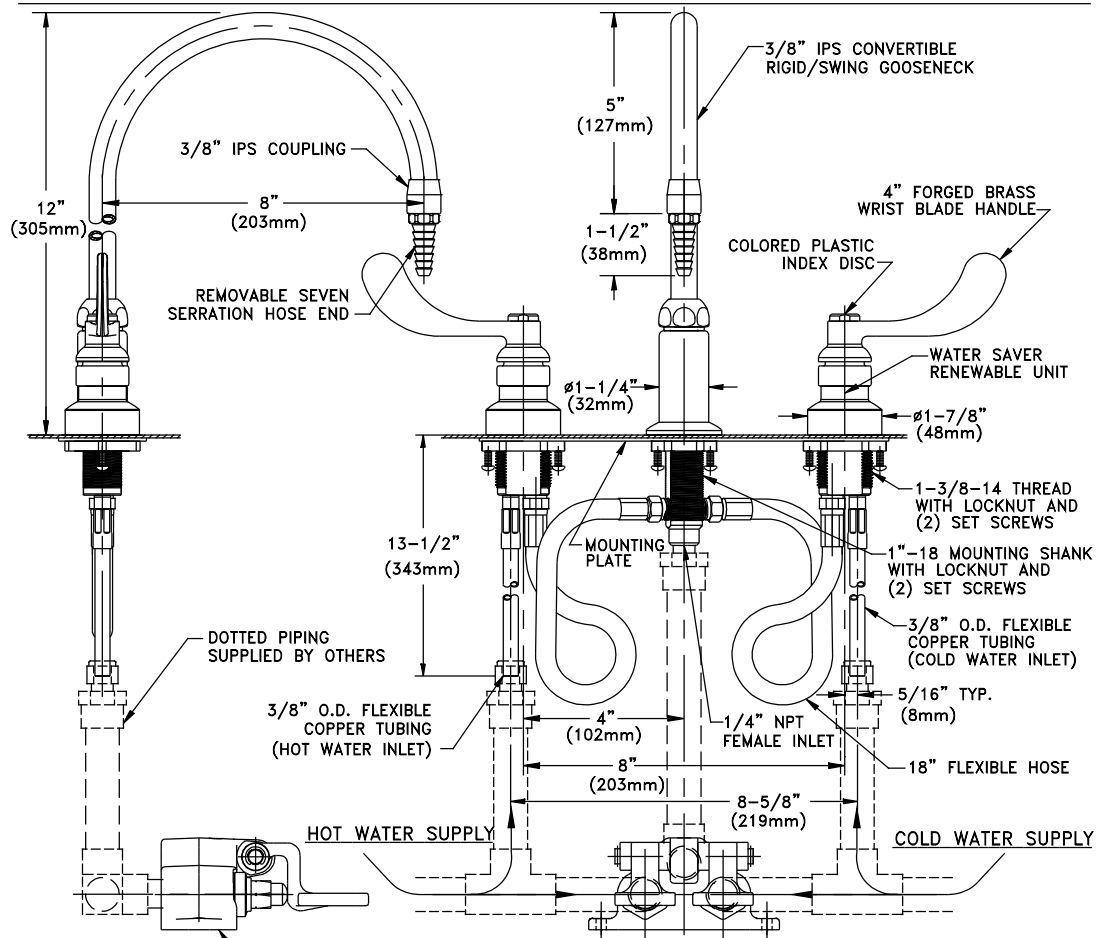




Distributed by:
 Safety Emporium
 PO Box 1003
 Blackwood, NJ 08012
 Ph: (866) 326-5412 toll-free
 Fax: (856) 553-6154
 esupport@safetyemporium.com
 www.safetyemporium.com

WaterSaver Faucet
 701 W Erie St
 Chicago, IL 60654
 312 666 5500 TELEPHONE
 312 666 5501 FACSIMILE
 wsflab.com

L2214TWI-8BH-3001
 LABORATORY MIXING FAUCET, DECK MOUNTED, 8" RIGID/SWING GOOSENECK, WRIST BLADE HANDLES,
 FLOOR MOUNTED FOOT-OPERATED SELF-CLOSING MIXING VALVE



L3001 FLOOR MOUNTED
 FOOT-OPERATED MIXING VALVE
 (POLISHED CHROME PLATED)

WATER SAVER RENEWABLE
 UNIT WITH REPLACEABLE
 STAINLESS STEEL SEAT
 MEASUREMENTS MAY VARY $\pm 1/4"$ (6mm).

- NOTES:**
1. VALVES AND CENTER FITTING ARE FULLY ASSEMBLED AND FACTORY TESTED.
 2. FIXTURE IS CERTIFIED BY CSA INTERNATIONAL TO COMPLY WITH ASME A112.18.1M AND CSA B125.1.
 3. PROVIDE (2) $\emptyset 1-3/8"$ HOLES FOR VALVES AND (1) $\emptyset 1-1/32"$ HOLE FOR CENTER FITTING.
 4. FIXTURE HAS A POLISHED CHROME PLATED FINISH.

Drawing Number: _____

Revision Number: **062221-SCJ**