

WaterSaver

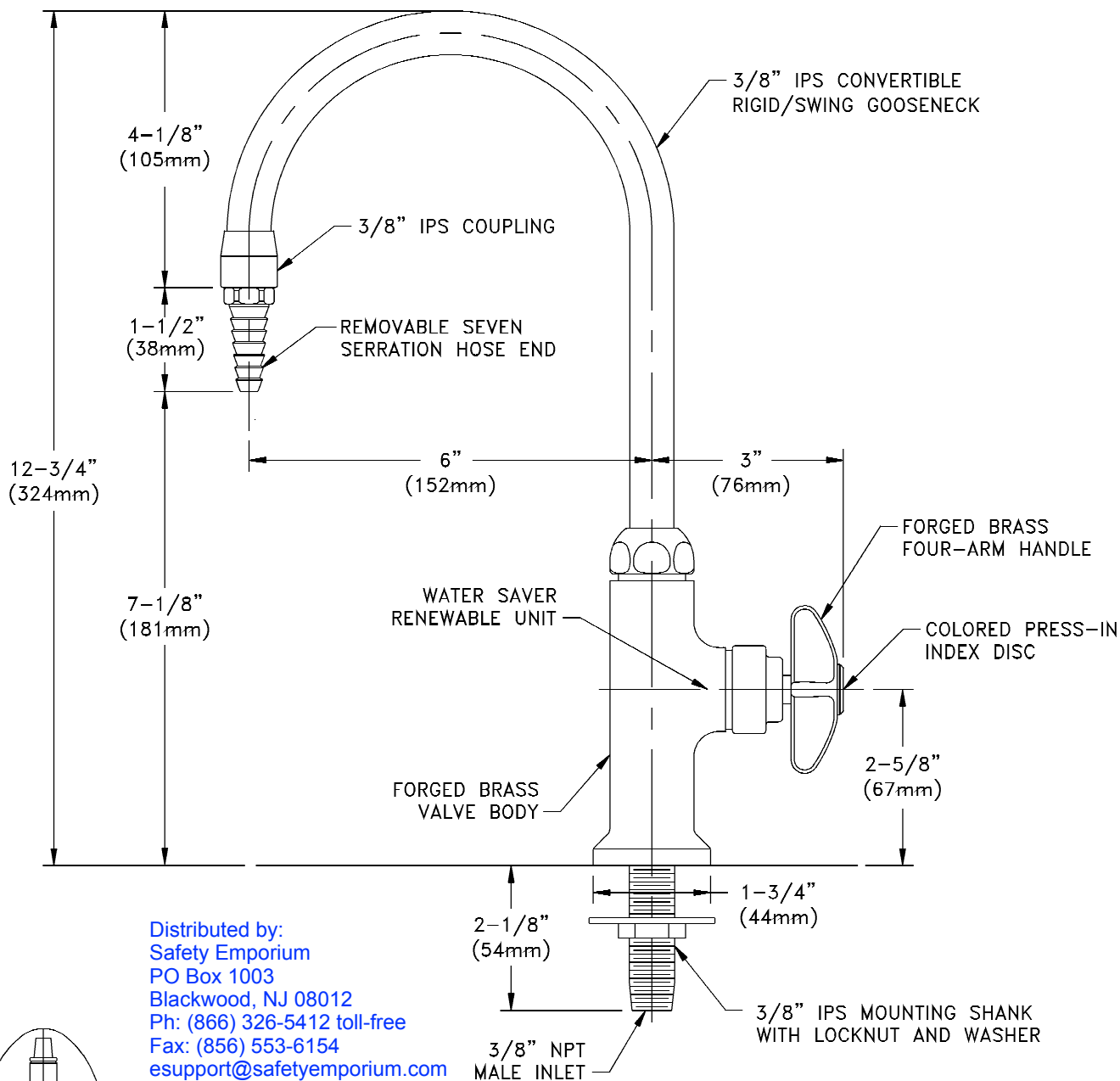
INNOVATIVE PRODUCTS FOR RESEARCH

WaterSaver Faucet
701 W Erie St
Chicago, IL 60654

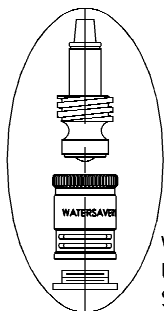
312 666 5500 TELEPHONE
312 666 5501 FACSIMILE
wsflab.com

L614

LABORATORY SINGLE FAUCET, DECK MOUNTED, 6" RIGID/SWING GOOSENECK



Distributed by:
Safety Emporium
PO Box 1003
Blackwood, NJ 08012
Ph: (866) 326-5412 toll-free
Fax: (856) 553-6154
esupport@safetyemporium.com
www.safetyemporium.com



WATER SAVER RENEWABLE UNIT WITH REPLACEABLE STAINLESS STEEL SEAT

MEASUREMENTS MAY VARY $\pm 1/4$ " (6mm).

NOTES:

1. FIXTURE IS FULLY ASSEMBLED AND FACTORY TESTED PRIOR TO SHIPMENT.
2. FIXTURE IS CERTIFIED BY CSA INTERNATIONAL TO COMPLY WITH ASME A112.18.1M AND CSA B125.1.
3. FIXTURE HAS A POLISHED CHROME PLATED FINISH.



Drawing Number: _____

Revision Number: 051421-SCJ