



WaterSaver

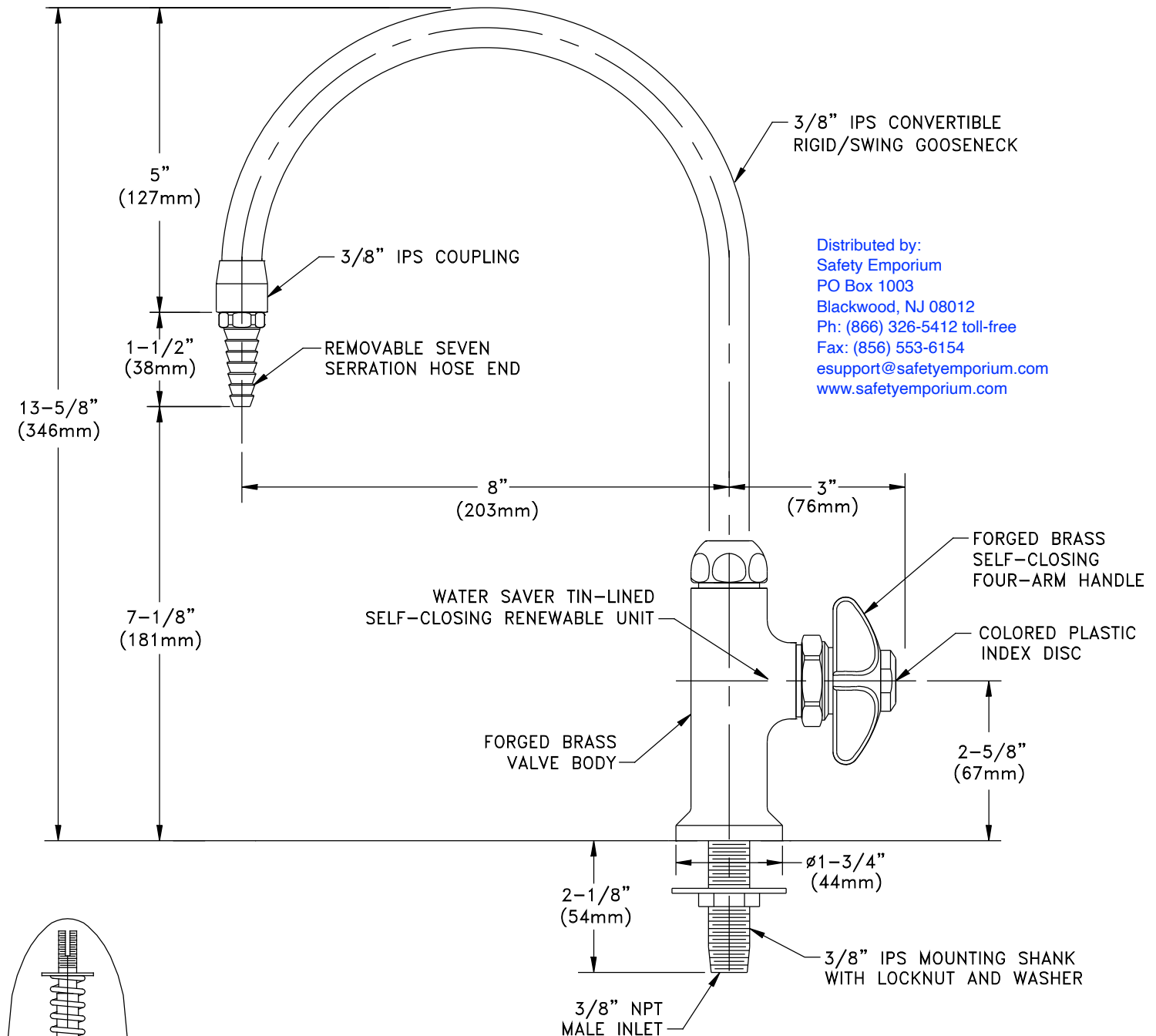
INNOVATIVE PRODUCTS FOR RESEARCH

WaterSaver Faucet
701 W Erie St
Chicago, IL 60654

312 666 5500 TELEPHONE
312 666 5501 FACSIMILE
wsflab.com

L684-8

PURE WATER FAUCET, TIN-LINED BRASS, DECK MOUNTED, SELF-CLOSING CONTROL, 8" RIGID/SWING GOOSENECK



Distributed by:
Safety Emporium
PO Box 1003
Blackwood, NJ 08012
Ph: (866) 326-5412 toll-free
Fax: (856) 553-6154
esupport@safetyemporium.com
www.safetyemporium.com

NOTES:

1. FIXTURE IS FULLY ASSEMBLED AND FACTORY TESTED PRIOR TO SHIPMENT.
2. FIXTURE HAS INTERIOR LINING OF PURE TIN.
3. FIXTURE HAS A POLISHED CHROME PLATED FINISH.

MEASUREMENTS MAY VARY $\pm 1/4"$ (6mm).

Drawing Number: _____

Revision Number: 022014-TEC