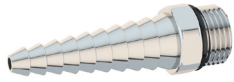


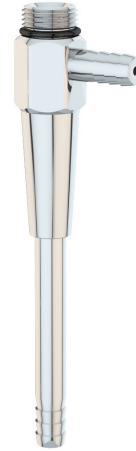
Outlet Fittings



**BO1405-G:** Straight ten serration hose end for gases. 3/8" NPS male inlet.



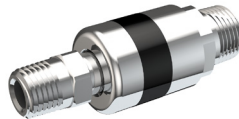
**BO1405-W:** Anti-splash straight seven serration hose end for water. 3/8" NPS male inlet.



**BO1275:** Aspirator. 3/8" NPS male inlet.



**BO055:** Aerator. 3/8" NPS male inlet.



**BO191:** Quick connect fitting. 3/8" NPT male inlet, 1/4" NPT male outlet.

**BO124:** Splash eliminator for use with BO1275 aspirator.

**BO055FC:** Same as above except with internal flow control. Specify flow rate in GPM when ordering.

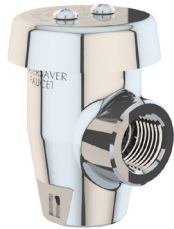
**BO191-2F:** Same as above except with 1/4" NPT female outlet.

**BO055VR:** Same as above except vandal-resistant.

**BO191-3M:** Same as above except with 3/8" NPT male outlet.

**BO191-3F:** Same as above except with 3/8" NPT female outlet.

Vacuum Breakers



**L100:** Atmospheric vacuum breaker. ASSE-certified under Standard 1001. 3/8" NPT female inlet and outlet.

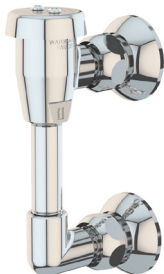


**L108:** Dual check backflow preventer. For continuous pressure applications. ASSE-certified under Standard 1024. 3/8" NPT female inlet and outlet.

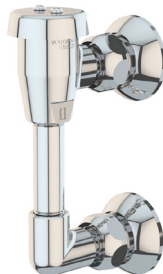


**L110:** Dual check vacuum breaker. ASSE-certified under Standard 1035. 3/8" NPS male inlet, 3/8" NPT female outlet.

**L101:** Same as above except with 1/2" NPT female inlet and outlet.



**L102:** Atmospheric vacuum breaker for panel or wall mounting. 1/2" NPT female inlet and outlet.



**L112:** Atmospheric vacuum breaker for panel or wall mounting. 3/8" NPT female inlet and outlet.

**L102WSA:** Same as above except with 1/2" IPS x 2-1/2" mounting shanks (assembled), locknuts and washers.

**L112WSA:** Same as above except with 3/8" IPS x 2-1/2" mounting shanks (assembled), locknuts and washers.

Distributed by:  
 Safety Emporium  
 PO Box 1003  
 Blackwood, NJ 08012  
 Ph: (866) 326-5412 toll-free  
 Fax: (856) 553-6154  
[esupport@safetyemporium.com](mailto:esupport@safetyemporium.com)  
[www.safetyemporium.com](http://www.safetyemporium.com)