

L2880

Needle Valve, Straight Pattern



Application: Flow regulation of all laboratory gases, including special gases such as nitrogen, oxygen, helium and hydrogen. When ordered, valve may be specially cleaned, lubricated and packaged for pure gas service. Valve is certified for natural gas service by CSA International.

Valve Body: Straight pattern forged brass.

Valve Unit: Floating stainless steel needle and replaceable stainless steel seat.

Handle: Forged brass four-arm handle with color-coded index disc.

Inlet: 3/8" NPT male inlet.

Outlet: 3/8" NPT female outlet with removable ten serration hose end.

Quality Assurance: Valve is fully assembled and factory tested prior to shipment.

Additional Models

L2882: Needle valve with angle serrated hose end.

L2883: Needle valve with quick connect fitting.

L2884: Needle valve with 1/4" OD compression fitting.

L2880-131WSA

Needle Valve, Deck Mounted



Mounting: Deck mounted turret base with single outlet.

Valve Body: Straight pattern forged brass.

Valve Unit: Floating stainless steel needle and replaceable stainless steel seat.

Handle: Forged brass four-arm handle with color-coded index disc.

Inlet: Furnished with 3/8" IPS mounting shank (assembled), locknut and washer. 3/8" NPT male inlet.

Outlet: 3/8" NPT female outlet with removable ten serration hose end.

Quality Assurance: Fixture is fully assembled and factory tested prior to shipment.

Additional Models

L2880-132AWSA: Same as above except with two valves at 90 degrees.

L2880-132SWSA: Same as above except with two valves at 180 degrees.

L2880-134WSA: Same as above except with four valves.

Distributed by:
Safety Emporium
PO Box 1003
Blackwood, NJ 08012
Ph: (866) 326-5412 toll-free
Fax: (856) 553-6154
esupport@safetyemporium.com
www.safetyemporium.com

L2880-141FT

Double Needle Valve, Wall Mounted



Mounting: For installation on vertical surfaces (such as drywall) where there is no access behind wall during installation.

Valve Bodies: Straight pattern forged brass.

Valve Units: Floating stainless steel needle and replaceable stainless steel seat.

Handles: Forged brass four-arm handles with color-coded index discs.

Inlet: 3/8" NPT female inlet with adjustable escutcheon.

Outlets: 3/8" NPT female outlets with removable ten serration hose ends.

Quality Assurance: Fixture is fully assembled and factory tested prior to shipment.

L2880-141WSA

Double Needle Valve, Panel/Overhead Mounted



Mounting: For installation on vertical or horizontal surfaces (such as pipe chases and service carriers) where there is access behind surface during installation.

Valve Bodies: Straight pattern forged brass.

Valve Units: Floating stainless steel needle and replaceable stainless steel seat.

Handles: Forged brass four-arm handles with color-coded index discs.

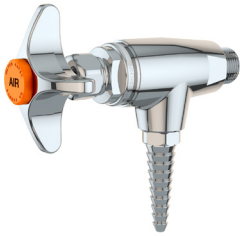
Inlet: Furnished with 3/8" IPS mounting shank (assembled), locknut and washer. 3/8" NPT male inlet.

Outlets: 3/8" NPT female outlets with removable ten serration hose ends.

Quality Assurance: Fixture is fully assembled and factory tested prior to shipment.

L3180

Needle Valve, Angle Pattern



Application: Flow regulation of all laboratory gases, including special gases such as nitrogen, oxygen, helium and hydrogen. When ordered, valve may be specially cleaned, lubricated and packaged for pure gas service. Valve is certified for natural gas service by CSA International.

Valve Body: Angle pattern forged brass.

Valve Unit: Floating stainless steel needle and replaceable stainless steel seat.

Handle: Forged brass four-arm handle with color-coded index disc.

Inlet: 3/8" NPT male inlet.

Outlet: 3/8" NPT female outlet with removable ten serration hose end.

Quality Assurance: Valve is fully assembled and factory tested prior to shipment.

Additional Models

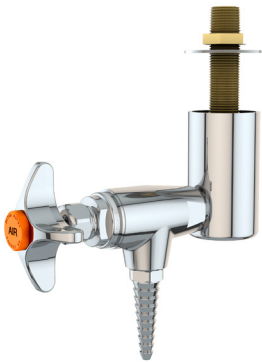
L3182: Needle valve with angle serrated hose end.

L3183: Needle valve with quick connect fitting.

L3184: Needle valve with 1/4" OD compression fitting.

L3180-131WSA

Needle Valve, Overhead Mounted



Mounting: Turret base with single outlet for mounting underneath reagent shelf.

Valve Body: Angle pattern forged brass.

Valve Unit: Floating stainless steel needle and replaceable stainless steel seat.

Handle: Forged brass four-arm handle with color-coded index disc.

Inlet: Furnished with 3/8" IPS mounting shank (assembled), locknut and washer. 3/8" NPT male inlet.

Outlet: 3/8" NPT female outlet with removable ten serration hose end.

Quality Assurance: Fixture is fully assembled and factory tested prior to shipment.

Additional Model

L3180-132SWSA: Same as above except with two valves at 180 degrees.

Distributed by:

Safety Emporium

PO Box 1003

Blackwood, NJ 08012

Ph: (866) 326-5412 toll-free

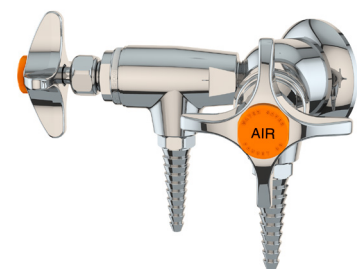
Fax: (856) 553-6154

esupport@safetyemporium.com

www.safetyemporium.com

L3180-141FT

Double Needle Valve, Wall Mounted



Mounting: For installation on vertical surfaces (such as drywall) where there is no access behind wall during installation. Wye fitting is threaded onto nipple stubbed out of wall. Threaded escutcheon is then backed up to wall to secure fixture and conceal pipe.

Valve Bodies: Angle pattern forged brass.

Valve Units: Floating stainless steel needle and replaceable stainless steel seat.

Handles: Forged brass four-arm handles with color-coded index discs.

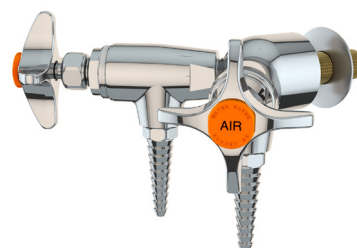
Inlet: 3/8" NPT female inlet with adjustable escutcheon.

Outlets: 3/8" NPT female outlets with removable ten serration hose ends.

Quality Assurance: Fixture is fully assembled and factory tested prior to shipment.

L3180-141WSA

Double Needle Valve, Panel/Overhead Mounted



Mounting: For installation on vertical or horizontal surfaces (such as pipe chases and service carriers) where there is access behind surface during installation.

Valve Bodies: Angle pattern forged brass.

Valve Units: Floating stainless steel needle and replaceable stainless steel seat.

Handles: Forged brass four-arm handles with color-coded index discs.

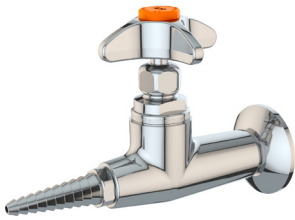
Inlet: Furnished with 3/8" IPS mounting shank (assembled), locknut and washer. 3/8" NPT male inlet.

Outlets: 3/8" NPT female outlets with removable ten serration hose ends.

Quality Assurance: Fixture is fully assembled and factory tested prior to shipment.

L4880FT-325

Needle Valve, Wall Mounted



Mounting: For installation on vertical surfaces (such as drywall) where there is no access behind wall during installation. Valve is threaded onto nipple stubbed out of wall. Threaded escutcheon is then backed up to wall to secure valve and conceal pipe.

Valve Body: Straight pattern forged brass.

Valve Unit: Floating stainless steel needle and replaceable stainless steel seat.

Handle: Forged brass four-arm handle with color-coded index disc.

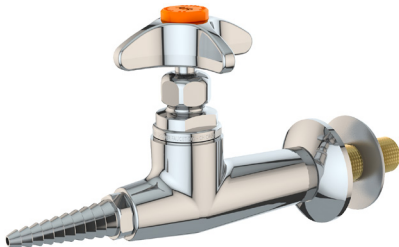
Inlet: 3/8" NPT female inlet with adjustable escutcheon.

Outlet: 3/8" NPT female outlet with removable ten serration hose end.

Quality Assurance: Fixture is fully assembled and factory tested prior to shipment.

L4880F-225WSA

Needle Valve, Panel/Overhead Mounted



Mounting: For installation on vertical or horizontal surfaces (such as pipe chases and service carriers) where there is access behind surface during installation. Threaded mounting shank is inserted through hole in surface and secured with locknut and washer.

Valve Body: Straight pattern forged brass.

Valve Unit: Floating stainless steel needle and replaceable stainless steel seat.

Handle: Forged brass four-arm handle with color-coded index disc.

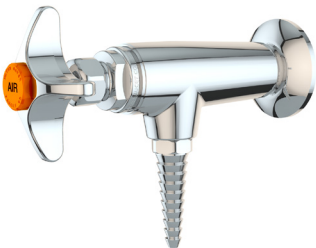
Inlet: Furnished with 3/8" IPS mounting shank (assembled), locknut and washer. 3/8" NPT male inlet.

Outlet: 3/8" NPT female outlet with removable ten serration hose end.

Quality Assurance: Fixture is fully assembled and factory tested prior to shipment.

L5180FT-325

Needle Valve, Wall Mounted



Mounting: For installation on vertical surfaces (such as drywall) where there is no access behind wall during installation. Valve is threaded onto nipple stubbed out of wall. Threaded escutcheon is then backed up to wall to secure valve and conceal pipe.

Valve Body: Angle pattern forged brass.

Valve Unit: Floating stainless steel needle and replaceable stainless steel seat.

Handle: Forged brass four-arm handle with color-coded index disc.

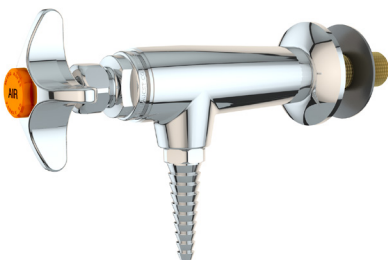
Inlet: 3/8" NPT female inlet with adjustable escutcheon.

Outlet: 3/8" NPT female outlet with removable ten serration hose end.

Quality Assurance: Fixture is fully assembled and factory tested prior to shipment.

L5180F-225WSA

Needle Valve, Panel Mounted



Mounting: For installation on vertical surfaces (such as pipe chases and service carriers) where there is access behind surface during installation. Threaded mounting shank is inserted through hole in surface and secured with locknut and washer.

Valve Body: Angle pattern forged brass.

Valve Unit: Floating stainless steel needle and replaceable stainless steel seat.

Handle: Forged brass four-arm handle with color-coded index disc.

Inlet: Furnished with 3/8" IPS mounting shank (assembled), locknut and washer. 3/8" NPT male inlet.

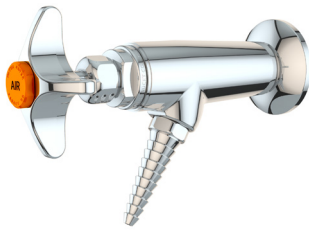
Outlet: 3/8" NPT female outlet with removable ten serration hose end.

Quality Assurance: Fixture is fully assembled and factory tested prior to shipment.

Distributed by:
Safety Emporium
 PO Box 1003
 Blackwood, NJ 08012
 Ph: (866) 326-5412 toll-free
 Fax: (856) 553-6154
esupport@safetyemporium.com
www.safetyemporium.com

L5280FT-325

Needle Valve, Wall Mounted, Angle Outlet



Mounting: For installation on vertical surfaces (such as drywall) where there is no access behind wall during installation. Valve is threaded onto nipple stubbed out of wall. Threaded escutcheon is then backed up to wall to secure valve and conceal pipe.

Valve Body: Angle pattern forged brass with angled outlet.

Valve Unit: Floating stainless steel needle and replaceable stainless steel seat.

Handle: Forged brass four-arm handle with color-coded index disc.

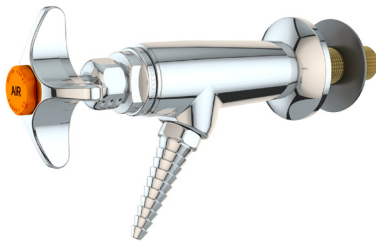
Inlet: 3/8" NPT female inlet with adjustable escutcheon.

Outlet: 3/8" NPT female angled outlet with removable ten serration hose end.

Quality Assurance: Fixture is fully assembled and factory tested prior to shipment.

L5280F-225WSA

Needle Valve, Panel Mounted, Angle Outlet



Mounting: For installation on vertical surfaces (such as pipe chases and service carriers) where there is access behind surface during installation. Threaded mounting shank is inserted through hole in surface and secured with locknut and washer.

Valve Body: Angle pattern forged brass with angled outlet.

Valve Unit: Floating stainless steel needle and replaceable stainless steel seat.

Handle: Forged brass four-arm handle with color-coded index disc.

Inlet: Furnished with 3/8" IPS mounting shank (assembled), locknut and washer. 3/8" NPT male inlet.

Outlet: 3/8" NPT female outlet with removable ten serration hose end.

Quality Assurance: Fixture is fully assembled and factory tested prior to shipment.

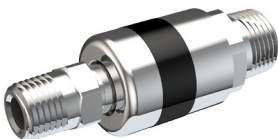
Options for Needle Valves



BO183 Compression Fitting: Compression fitting for 3/8" OD tube. Polished chrome plated finish. 3/8" NPT male inlet, 3/8" OD compression outlet.



BO183-1/4 Compression Fitting: Compression fitting for 1/4" OD tube. Polished chrome plated finish. 3/8" NPT male inlet, 1/4" OD compression outlet.



BO191-2M Quick Connect Fitting: Body has internal shut-off valve. Polished chrome plated finish. 3/8" NPT male inlet, 1/4" NPT male outlet.

BO191-3M: Same as above except with 3/8" NPT male outlet.

Distributed by:
 Safety Emporium
 PO Box 1003
 Blackwood, NJ 08012
 Ph: (866) 326-5412 toll-free
 Fax: (856) 553-6154
esupport@safetyemporium.com
www.safetyemporium.com