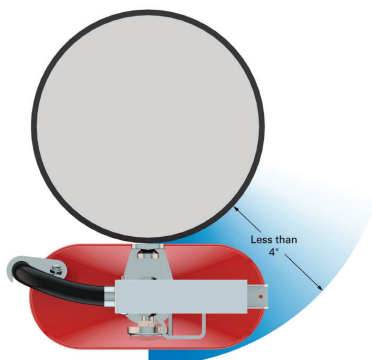


10H-ABC Dry Chemical Fire Extinguisher, Class ABC, 10 lb.



Application: Multi-purpose 10 lb. dry chemical fire extinguisher for wall and column mounting. For use on Class A, B and C fires. Not recommended for use on sensitive electronic equipment.

Mounting: Surface mounted on wall or column with patented swivel hook. Hook holds unit securely, even if bumped or pushed.

Accessibility: Fire extinguisher depth is 3-1/2" (90mm). When wall or column mounted, unit complies with 4" (102mm) maximum limit for protruding objects as required by the Americans with Disabilities Act (ADA), 2010 ADA Standards for Accessible Design, International Building Code and ANSI/ICC ANSI A117.1.

Healthcare Facilities: Facilitates compliance with CMS accessibility requirements. Certified as "MR Conditional" for safe use in environments with magnetic resonance imaging (MRI) equipment up to 3 Teslas.

UL/ULC Rating: 4A:80B:C

Capacity: 10 lb. (4.54 kg).

Vessel: Extruded aluminum body with welded aluminum top and bottom caps and durable red powder coated finish.

Valve: Anodized aluminum valve with stainless steel handle and pull pin, rubber hose and anodized aluminum nozzle.

Agent: Monoammonium phosphate-based dry chemical.

Transportation: Meets US Department of Transportation requirements for packaging and shipping. Labeled per UN1044.

Quality Assurance: UL listed, compliant with NFPA 10 and tested and certified to ANSI/UL-299, ANSI/UL-711, CAN/ULC-5504 and CAN/ULC-5508. Fire extinguisher is fully assembled, filled, pressurized and tested prior to shipment.

Warranty: Six years.

Patents: Covered by U.S. patents 9,364,696; D760,443; D760,444; D777,566.

Product Specifications

Discharge Time: 22 seconds

Discharge Range: 10 – 15 ft. (3 – 4.5m)

Temperature Range: -40° to 120° F (-40° to 49° C)

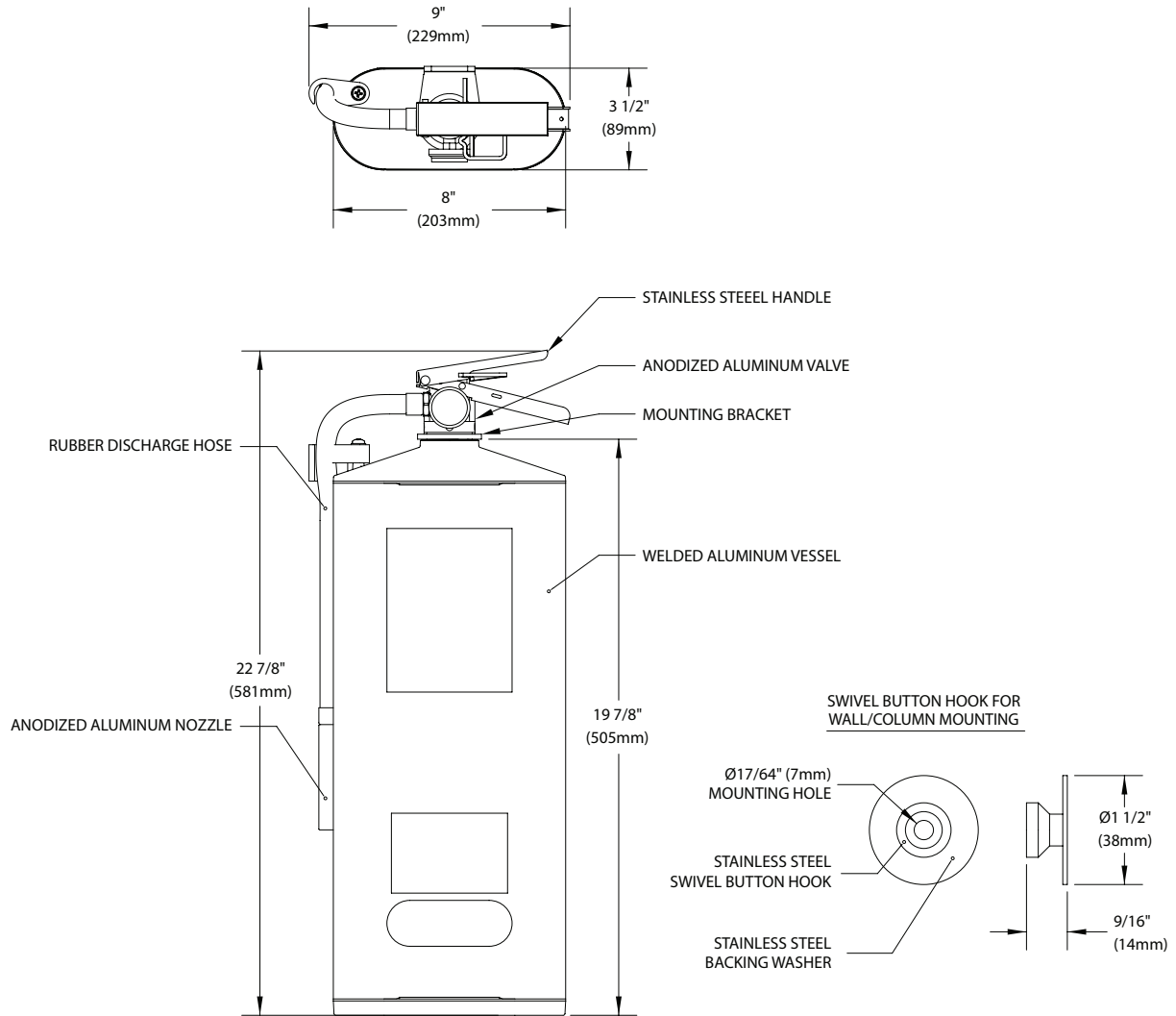
Operating Pressure: 195 PSI (1344 kPa)

Dimensions: 22-7/8" (581mm) high x 8" (203mm) wide x 3-1/2" (89mm) deep

Shipping Weight: 22 lbs. (10 kg)

Distributed by:
Safety Emporium
PO Box 1003
Blackwood, NJ 08012
Ph: (866) 326-5412 toll-free
Fax: (856) 553-6154
esupport@safetyemporium.com
www.safetyemporium.com

10H-ABC Dry Chemical Fire Extinguisher, Class ABC, 10 lb.



THIS SPACE FOR ARCHITECT/ENGINEER APPROVAL

Distributed by:
 Safety Emporium
 PO Box 1003
 Blackwood, NJ 08012
 Ph: (866) 326-5412 toll-free
 Fax: (856) 553-6154
 esupport@safetyemporium.com
 www. safetyemporium.com

Due to continuing product improvement, the information contained in this document is subject to change without notice. All dimensions are ± 1/4" (6mm). Rev. 111119